

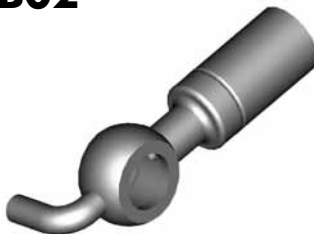
BANJO FITTINGS

HFB01



HOLE	THICK	WIDTH	ANGLE	OAL	FITS
10mm	8mm	17mm	-	54mm	V

HFB02



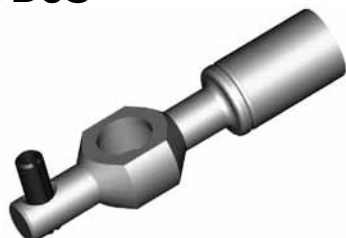
HOLE	THICK	WIDTH	ANGLE	OAL	FITS
10mm	10mm	18mm	-	64mm	A

HFB03



HOLE	THICK	WIDTH	ANGLE	OAL	FITS
10mm	8mm	17mm	-	66mm	A

HFB05



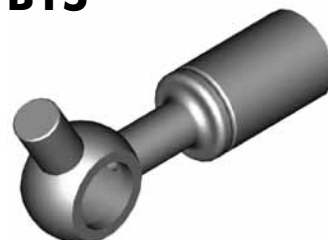
HOLE	THICK	WIDTH	ANGLE	OAL	FITS
10mm	10mm	17mm	-	65mm	A

HFB09



HOLE	THICK	WIDTH	ANGLE	OAL	FITS
10mm	10mm	18mm	-	55mm	V

HFB15



HOLE	THICK	WIDTH	ANGLE	OAL	FITS
10mm	10mm	23mm	-	52mm	A

HFB19



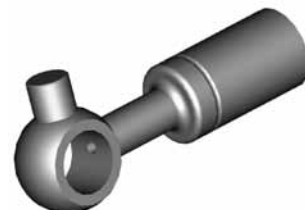
HOLE	THICK	WIDTH	ANGLE	OAL	FITS
15mm	13.5mm	25mm	-	45mm	US

HFB27



HOLE	THICK	WIDTH	ANGLE	OAL	FITS
8mm	6mm	14mm	-	53mm	V

HFB28



HOLE	THICK	WIDTH	ANGLE	OAL	FITS
10mm	10mm	22mm	-	54mm	A

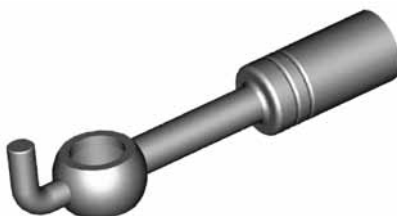
HFB34



Bendable

HOLE	THICK	WIDTH	ANGLE	OAL	FITS
10mm	8mm	17mm	-	62.5mm	UNI

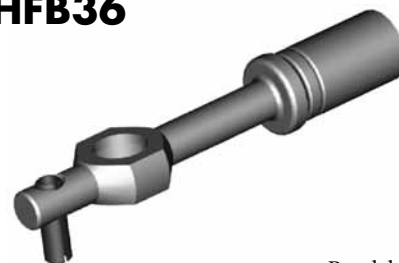
HFB35



Bendable

HOLE	THICK	WIDTH	ANGLE	OAL	FITS
10mm	10mm	17mm	-	80mm	UNI

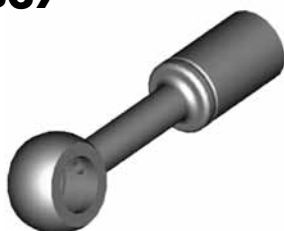
HFB36



Bendable

HOLE	THICK	WIDTH	ANGLE	OAL	FITS
10mm	8mm	17mm	-	84mm	UNI

HFB37



Bendable

HOLE	THICK	WIDTH	ANGLE	OAL	FITS
10mm	10mm	18mm	-	64mm	UNI

HFB47



HOLE	THICK	WIDTH	ANGLE	OAL	FITS
12mm	10mm	19mm	-	55mm	V

HFB50



Right

HOLE	THICK	WIDTH	ANGLE	OAL	FITS
10mm	10mm	28mm	-	50mm	US

Round Style - Straight

A = Asian

EU = European

US = United States

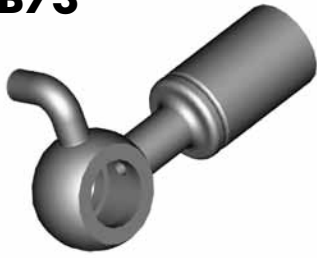
UNI = Universal

V = Various

BANJO FITTINGS

Round Style - Straight

HFB73



Left

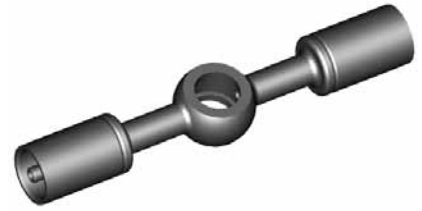
HOLE	THICK	WIDTH	ANGLE	OAL	FITS
10mm	10mm	28mm	-	50mm	US

HFB111



HOLE	THICK	WIDTH	ANGLE	OAL	FITS
8mm	13mm	21mm	-	40mm	US

HFB194



HOLE	THICK	WIDTH	ANGLE	OAL	FITS
10mm	10mm	18mm	-	92mm	V

HFB288



HOLE	THICK	WIDTH	ANGLE	OAL	FITS
10mm	8mm	17mm	-	61mm	A

HFB289



HOLE	THICK	WIDTH	ANGLE	OAL	FITS
10mm	10mm	-	-	-	V

HFB344



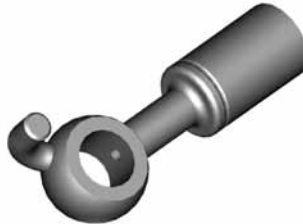
HOLE	THICK	WIDTH	ANGLE	OAL	FITS
10mm	10mm	-	-	58mm	A

HFB350



HOLE	THICK	WIDTH	ANGLE	OAL	FITS
10mm	10mm	-	-	45mm	A

HFB351



Left

HOLE	THICK	WIDTH	ANGLE	OAL	FITS
10mm	10mm	-	-	55mm	A

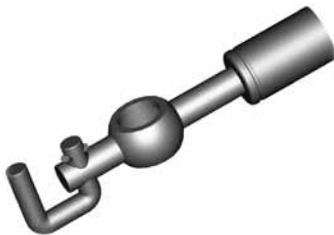
HFB352



Right

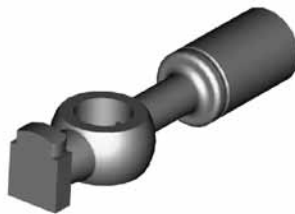
HOLE	THICK	WIDTH	ANGLE	OAL	FITS
10mm	10mm	-	-	55mm	A

HFB365



HOLE	THICK	WIDTH	ANGLE	OAL	FITS
10mm	8mm	17mm	-	63mm	A

HFB375



HOLE	THICK	WIDTH	ANGLE	OAL	FITS
10mm	10mm	18mm	-	65mm	EU

HFB448



HOLE	THICK	WIDTH	ANGLE	OAL	FITS
7/16"	10mm	19mm	-	60mm	V

CAUTION

Illustrations shown in this reference guide may vary slightly in detail from actual parts due to manufacturer's tolerances and design differences. Note: Illustrations not to scale.

DISCLAIMER NOTICE

The illustrations and data contained in this illustrated reference guide are intended as an aid in identifying the various products and have been obtained and developed from the specifications and information available. Although BrakeQuip believes that such illustrations and data are correct, errors may exist and further verification on the part of the user may be necessary.

A = Asian

EU = European

US = United States

UNI = Universal

V = Various

BANJO FITTINGS

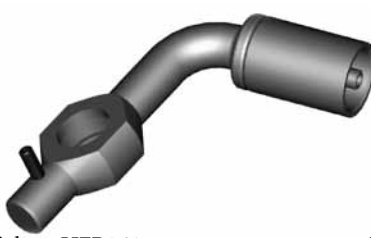
HFB10



Harley

HOLE	THICK	WIDTH	ANGLE	OAL	FITS
10mm	9.5mm	19.05mm	70°	-	US

HFB24



Right = HFB164

Left

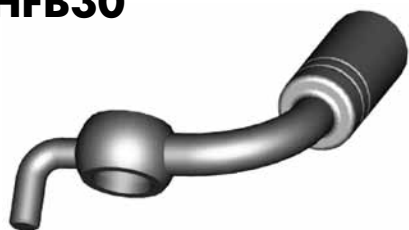
HOLE	THICK	WIDTH	ANGLE	OAL	FITS
10mm	8mm	17mm	75°	64mm	A

HFB29



HOLE	THICK	WIDTH	ANGLE	OAL	FITS
10mm	10mm	28mm	40°	52mm	US

HFB30



Left = HFB75

Right

HOLE	THICK	WIDTH	ANGLE	OAL	FITS
10mm	10mm	17mm	90°	52mm	A

HFB31



HOLE	THICK	WIDTH	ANGLE	OAL	FITS
10mm	10mm	17mm	25°	68mm	A

HFB32



HOLE	THICK	WIDTH	ANGLE	OAL	FITS
10mm	8mm	17mm	90°	39mm	V

HFB33



HOLE	THICK	WIDTH	ANGLE	OAL	FITS
10mm	8mm	17mm	75°	60mm	A

HFB75

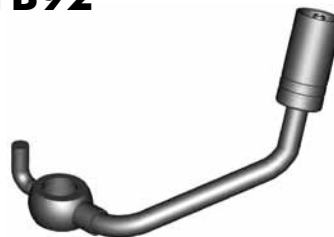


Right = HFB30

Left

HOLE	THICK	WIDTH	ANGLE	OAL	FITS
10mm	10mm	17mm	90°	61mm	A

HFB92



Left

HOLE	THICK	WIDTH	ANGLE	OAL	FITS
10mm	10mm	18mm	55°	90mm	A

HFB93



Right

HOLE	THICK	WIDTH	ANGLE	OAL	FITS
10mm	10mm	18mm	55°	90mm	A

HFB105



Left

HOLE	THICK	WIDTH	ANGLE	OAL	FITS
3/8"	1/2"	21mm	25°	113mm	US

HFB106



Right

HOLE	THICK	WIDTH	ANGLE	OAL	FITS
3/8"	1/2"	21mm	25°	113mm	US

HFB150



Harley

HOLE	THICK	WIDTH	ANGLE	OAL	FITS
7/16"	8.5mm	19mm	-	192mm	US

HFB157



HOLE	THICK	WIDTH	ANGLE	OAL	FITS
10mm	10mm	18mm	70°	102mm	A

HFB158



Left

HOLE	THICK	WIDTH	ANGLE	OAL	FITS
7/16"	15mm	35mm	35°	57mm	US

Round Style - Bent

A = Asian

EU = European

US = United States

UNI = Universal

V = Various

BANJO FITTINGS

HFB159



Right

HOLE	THICK	WIDTH	ANGLE	OAL	FITS
7/16"	15mm	35mm	35°	57mm	US

HFB164

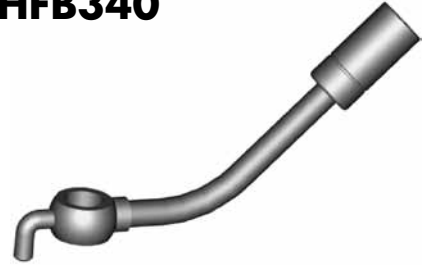


Left = HFB24

Right

HOLE	THICK	WIDTH	ANGLE	OAL	FITS
10mm	8mm	17mm	75°	64mm	A

HFB340



HOLE	THICK	WIDTH	ANGLE	OAL	FITS
10mm	10mm	18mm	45°	100mm	A

HFB341



HOLE	THICK	WIDTH	ANGLE	OAL	FITS
10mm	10mm	18mm	75°	55mm	A

HFB342



Right

HOLE	THICK	WIDTH	ANGLE	OAL	FITS
10mm	8mm	17mm	15°	60mm	A

HFB343



Left

HOLE	THICK	WIDTH	ANGLE	OAL	FITS
10mm	8mm	17mm	15°	60mm	A

HFB345



Left

HOLE	THICK	WIDTH	ANGLE	OAL	FITS
10mm	10mm	18mm	50°	45mm	A

HFB346



Right

HOLE	THICK	WIDTH	ANGLE	OAL	FITS
10mm	10mm	18mm	50°	45mm	A

HFB348



Left

HOLE	THICK	WIDTH	ANGLE	OAL	FITS
10mm	15mm	18mm	30°	50mm	A

HFB349



Right

HOLE	THICK	WIDTH	ANGLE	OAL	FITS
10mm	15mm	18mm	30°	50mm	A

HFB353



Right

HOLE	THICK	WIDTH	ANGLE	OAL	FITS
10mm	8mm	18mm	75°	60mm	A

HFB354



Left

HOLE	THICK	WIDTH	ANGLE	OAL	FITS
10mm	8mm	18mm	75°	60mm	A

HFB356



Left

HOLE	THICK	WIDTH	ANGLE	OAL	FITS
10mm	8mm	18mm	40°	60mm	A

HFB357



Right

HOLE	THICK	WIDTH	ANGLE	OAL	FITS
10mm	8mm	18mm	40°	60mm	A

HFB358



Left

HOLE	THICK	WIDTH	ANGLE	OAL	FITS
10mm	8mm	17mm	75°	45mm	A

Round Style - Bent

A = Asian

EU = European

US = United States

UNI = Universal

V = Various

BANJO FITTINGS

HFB359



Right

HOLE	THICK	WIDTH	ANGLE	OAL	FITS
10mm	8mm	17mm	75°	45mm	A

HFB360



Right

HOLE	THICK	WIDTH	ANGLE	OAL	FITS
10mm	8mm	18mm	55°	65mm	A

HFB361



Left

HOLE	THICK	WIDTH	ANGLE	OAL	FITS
10mm	8mm	18mm	55°	65mm	A

HFB362



Left

HOLE	THICK	WIDTH	ANGLE	OAL	FITS
10mm	8mm	18mm	80°	45mm	A

HFB363



Right

HOLE	THICK	WIDTH	ANGLE	OAL	FITS
10mm	8mm	18mm	80°	45mm	A

HFB364



HOLE	THICK	WIDTH	ANGLE	OAL	FITS
10mm	8mm	18mm	75°	50mm	A

HFB366



HOLE	THICK	WIDTH	ANGLE	OAL	FITS
10mm	8mm	17mm	20°	-	A

HFB372



HOLE	THICK	WIDTH	ANGLE	OAL	FITS
10mm	10mm	18mm	60°	45mm	A

HFB373



HOLE	THICK	WIDTH	ANGLE	OAL	FITS
10mm	10mm	18mm	55°	65mm	A

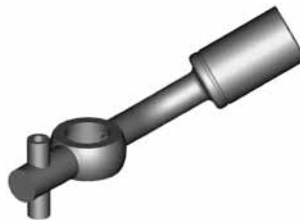
HFB389



Right

HOLE	THICK	WIDTH	ANGLE	OAL	FITS
10mm	8mm	17mm	45°	75mm	A

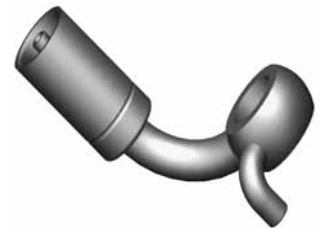
HFB390



Left

HOLE	THICK	WIDTH	ANGLE	OAL	FITS
10mm	8mm	17mm	45°	75mm	A

HFB456



Right

HOLE	THICK	WIDTH	ANGLE	OAL	FITS
10mm	10mm	18mm	90°	48mm	A

HFB457



Left

HOLE	THICK	WIDTH	ANGLE	OAL	FITS
10mm	10mm	18mm	90°	48mm	A

Round Style - Bent

A = Asian

EU = European

US = United States

UNI = Universal

V = Various

BANJO FITTINGS

Block Style - 3/8" Hole

HFB67



HOLE	THICK	WIDTH	ANGLE	OAL	FITS
3/8"	1/2"	28mm	-	48mm	US

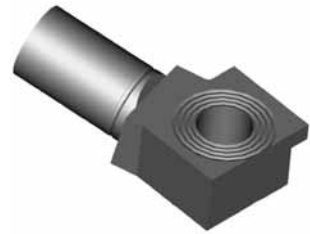
HFB230



Right

HOLE	THICK	WIDTH	ANGLE	OAL	FITS
3/8"	7/16"	22mm	10°	45mm	US

HFB231



Left

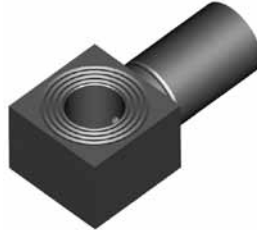
HOLE	THICK	WIDTH	ANGLE	OAL	FITS
3/8"	7/16"	22mm	10°	45mm	US

HFB243



HOLE	THICK	WIDTH	ANGLE	OAL	FITS
3/8"	14.9mm	20.5mm	-	42mm	US

HFB283



HOLE	THICK	WIDTH	ANGLE	OAL	FITS
3/8"	14.7mm	20mm	-	42mm	US

HFB384



HOLE	THICK	WIDTH	ANGLE	OAL	FITS
3/8"	1/2"	25.4mm	-	45mm	US

CAUTION

Illustrations shown in this reference guide may vary slightly in detail from actual parts due to manufacturer's tolerances and design differences. Note: Illustrations not to scale.

DISCLAIMER NOTICE

The illustrations and data contained in this illustrated reference guide are intended as an aid in identifying the various products and have been obtained and developed from the specifications and information available. Although BrakeQuip believes that such illustrations and data are correct, errors may exist and further verification on the part of the user may be necessary.

A = Asian

EU = European

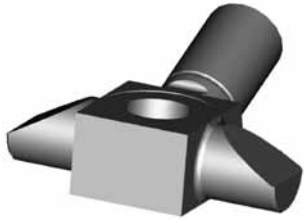
US = United States

UNI = Universal

V = Various

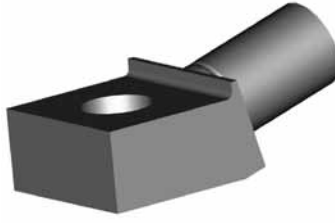
BANJO FITTINGS

HFB41



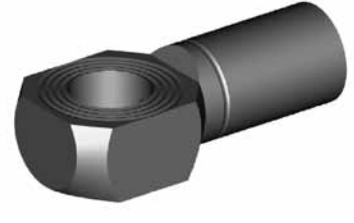
HOLE	THICK	WIDTH	ANGLE	OAL	FITS
7/16"	14mm	48mm	20°	50mm	US

HFB48



HOLE	THICK	WIDTH	ANGLE	OAL	FITS
7/16"	1/2"	25.5mm	15°	49mm	US

HFB54



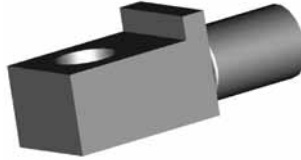
HOLE	THICK	WIDTH	ANGLE	OAL	FITS
7/16"	11mm	19mm	-	43mm	US

HFB55



HOLE	THICK	WIDTH	ANGLE	OAL	FITS
7/16"	1/2"	25mm	-	47mm	US

HFB59



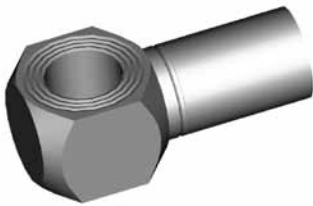
HOLE	THICK	WIDTH	ANGLE	OAL	FITS
7/16"	14.8mm	19.5mm	-	52mm	US

HFB60



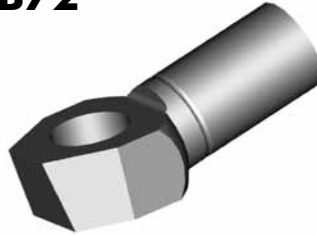
HOLE	THICK	WIDTH	ANGLE	OAL	FITS
7/16"	11.5mm	20mm	10°	46mm	V

HFB66



HOLE	THICK	WIDTH	ANGLE	OAL	FITS
7/16"	14.7mm	19mm	-	41mm	US

HFB72



HOLE	THICK	WIDTH	ANGLE	OAL	FITS
7/16"	11mm	19mm	10°	42mm	US

HFB84



HOLE	THICK	WIDTH	ANGLE	OAL	FITS
7/16"	11mm	19.8mm	25°	50mm	US

Block Style - 7/16" Hole

A = Asian

EU = European

US = United States

UNI = Universal

V = Various

BANJO FITTINGS

Block - 8mm Hole

HFB112



HOLE	THICK	WIDTH	ANGLE	OAL	FITS
8mm	14mm	17mm	35°	50mm	US

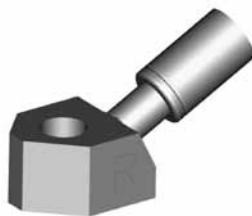
HFB07



Left

HOLE	THICK	WIDTH	ANGLE	OAL	FITS
10mm	16mm	22mm	27°	59mm	A

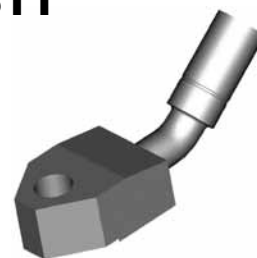
HFB08



Right

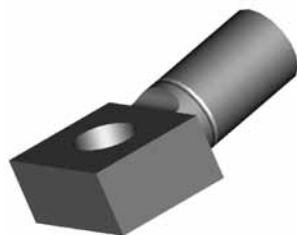
HOLE	THICK	WIDTH	ANGLE	OAL	FITS
10mm	16mm	22mm	27°	59mm	A

HFB11



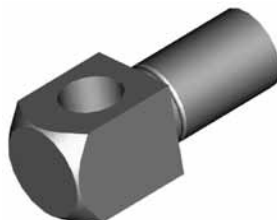
HOLE	THICK	WIDTH	ANGLE	OAL	FITS
10mm	16mm	28mm	40°	92mm	A

HFB12



HOLE	THICK	WIDTH	ANGLE	OAL	FITS
10mm	11.5mm	20mm	10°	46mm	V

HFB13



HOLE	THICK	WIDTH	ANGLE	OAL	FITS
10mm	16mm	16mm	-	42mm	V

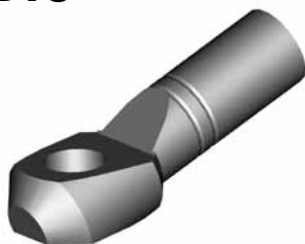
HFB14



HOLE	THICK	WIDTH	ANGLE	OAL	FITS
10mm	13mm	20mm	20°	55mm	US

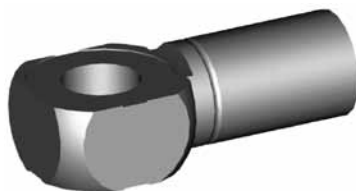
Block Style - 10mm Hole

HFB16



HOLE	THICK	WIDTH	ANGLE	OAL	FITS
10mm	10.4mm	19mm	20°	54mm	EU

HFB40



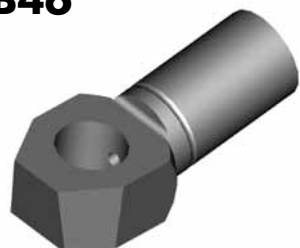
HOLE	THICK	WIDTH	ANGLE	OAL	FITS
10mm	11.3mm	19mm	-	42mm	US

HFB45



HOLE	THICK	WIDTH	ANGLE	OAL	FITS
10mm	11mm	19.6mm	10°	47mm	US

HFB46



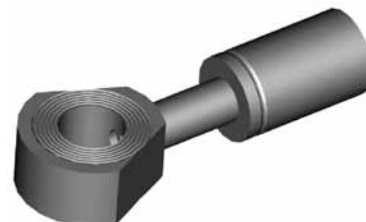
HOLE	THICK	WIDTH	ANGLE	OAL	FITS
10mm	11mm	17.6mm	10°	44mm	US

HFB49



HOLE	THICK	WIDTH	ANGLE	OAL	FITS
10mm	11.3mm	19mm	-	44mm	US

HFB53



HOLE	THICK	WIDTH	ANGLE	OAL	FITS
10mm	10mm	22mm	-	57mm	US

A = Asian

EU = European

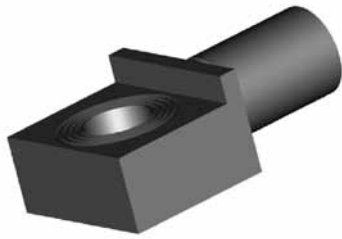
US = United States

UNI = Universal

V = Various

BANJO FITTINGS

HFB56



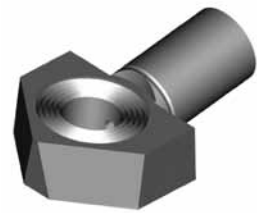
HOLE	THICK	WIDTH	ANGLE	OAL	FITS
10mm	11.7mm	26mm	-	45mm	US

HFB57



HOLE	THICK	WIDTH	ANGLE	OAL	FITS
10mm	11.6mm	33mm	-	49mm	US

HFB62



HOLE	THICK	WIDTH	ANGLE	OAL	FITS
10mm	11mm	28mm	10°	44mm	US

HFB81



HOLE	THICK	WIDTH	ANGLE	OAL	FITS
10mm	23mm	16mm	50°	46mm	A

HFB85



HOLE	THICK	WIDTH	ANGLE	OAL	FITS
10mm	14.7mm	48mm	20°	50mm	US

HFB91



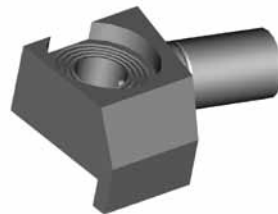
HOLE	THICK	WIDTH	ANGLE	OAL	FITS
10mm	11.4mm	20mm	-	42mm	US

HFB100



HOLE	THICK	WIDTH	ANGLE	OAL	FITS
10mm	8mm	17mm	-	51mm	EU

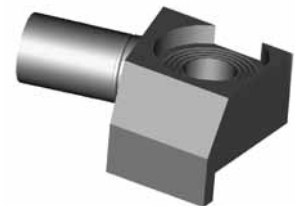
HFB133



Right

HOLE	THICK	WIDTH	ANGLE	OAL	FITS
10mm	11mm	26mm	-	90mm	US

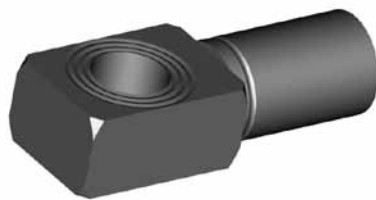
HFB134



Left

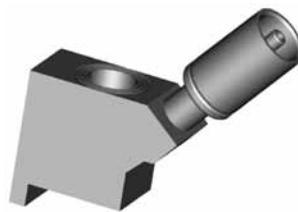
HOLE	THICK	WIDTH	ANGLE	OAL	FITS
10mm	11mm	26mm	-	50mm	US

HFB144



HOLE	THICK	WIDTH	ANGLE	OAL	FITS
10mm	11.5mm	17mm	-	46mm	V

HFB149



HOLE	THICK	WIDTH	ANGLE	OAL	FITS
10mm	24mm	16mm	50°	55mm	A

HFB187



HOLE	THICK	WIDTH	ANGLE	OAL	FITS
10mm	8mm	19mm	-	61mm	EU

HFB286



HOLE	THICK	WIDTH	ANGLE	OAL	FITS
10mm	11.5	22.4mm	-	62mm	US

HFB300



HOLE	THICK	WIDTH	ANGLE	OAL	FITS
10mm	11.4mm	17mm	15°	50mm	A

HFB403



HOLE	THICK	WIDTH	ANGLE	OAL	FITS
10mm	11.5	26mm	-	52mm	US

Block Style - 10mm Hole

A = Asian

EU = European

US = United States

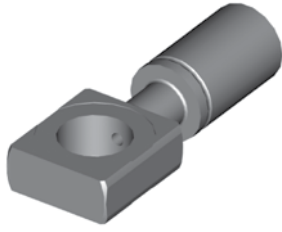
UNI = Universal

V = Various

BANJO FITTINGS

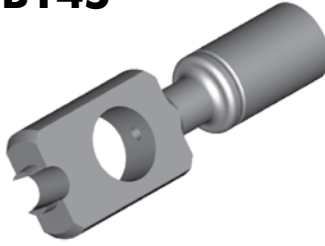
Block Style - 12mm & 16mm Hole

HFB101



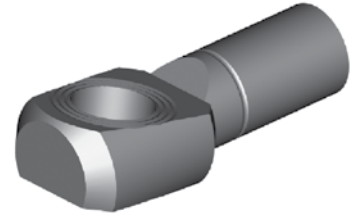
HOLE	THICK	WIDTH	ANGLE	OAL	FITS
12mm	8mm	19mm	-	51mm	EU

HFB145



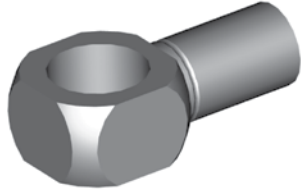
HOLE	THICK	WIDTH	ANGLE	OAL	FITS
12mm	8mm	19mm	-	61mm	EU

HFB146



HOLE	THICK	WIDTH	ANGLE	OAL	FITS
12mm	11.5mm	20mm	10°	50mm	EU

HFB38



HOLE	THICK	WIDTH	ANGLE	OAL	FITS
16mm	14mm	22.2mm	-	44mm	US

DID YOU KNOW?

Some female fittings were designed with locating and directional profiles to enable the novice installer to route the hose correctly. This meant having both left hand and right hand fittings. BrakeQuip designs these fittings with a locating profile only, which then makes this fitting able to fit both sides of the vehicle.

DID YOU KNOW?

Most female fittings with a bulkhead mount use a 5/8" x 18NF thread, and this is the only thread that BQ supplies. However some of these fittings come with a M16 x 1.5 or a fine brass thread. If in doubt, supply a BQ13 nut with the fitting.

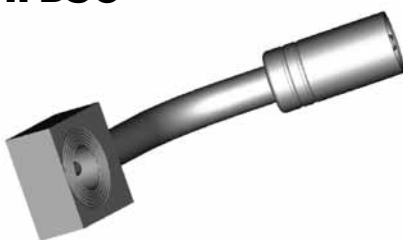
BANJO FITTINGS

HFB39



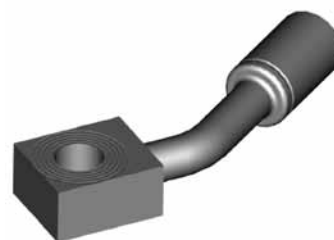
HOLE	THICK	WIDTH	ANGLE	OAL	FITS
3/8"	1/2"	19.2mm	15°	104mm	US

HFB58



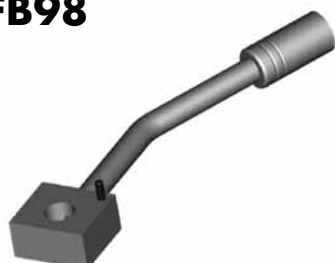
HOLE	THICK	WIDTH	ANGLE	OAL	FITS
3/8"	7/16"	22.2mm	65°	80mm	US

HFB90



HOLE	THICK	WIDTH	ANGLE	OAL	FITS
3/8"	7/16"	19mm	35°	75mm	US

HFB98



HOLE	THICK	WIDTH	ANGLE	OAL	FITS
3/8"	1/2"	25mm	25°	120mm	US

HFB148



HOLE	THICK	WIDTH	ANGLE	OAL	FITS
3/8"	1/2"	25mm	85°	131mm	US

HFB182



HOLE	THICK	WIDTH	ANGLE	OAL	FITS
3/8"	1/2"	22.2mm	-	165mm	US

HFB188



HOLE	THICK	WIDTH	ANGLE	OAL	FITS
3/8"	12.5mm	40mm	90°	116mm	US

HFB193



HOLE	THICK	WIDTH	ANGLE	OAL	FITS
3/8"	1/2"	23mm	10°	110mm	US

HFB203



HOLE	THICK	WIDTH	ANGLE	OAL	FITS
3/8"	11mm	25mm	35°	75mm	US

HFB211



HOLE	THICK	WIDTH	ANGLE	OAL	FITS
3/8"	1/2"	22mm	-	175mm	US

HFB273



HOLE	THICK	WIDTH	ANGLE	OAL	FITS
3/8"	1/2"	28.5mm	90°	-	US

HFB61



HOLE	THICK	WIDTH	ANGLE	OAL	FITS
7/16"	14.6mm	22.2mm	105°	60mm	US

HFB80



HOLE	THICK	WIDTH	ANGLE	OAL	FITS
7/16"	15mm	20mm	30°	110mm	US

HFB276



HOLE	THICK	WIDTH	ANGLE	OAL	FITS
7/16"	14.7mm	22.2mm	90°	65mm	US

Tube Style (Either Side) - 3/8" Hole

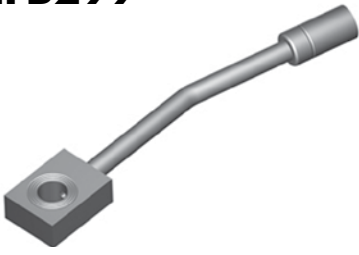
7/16" Hole

A = Asian EU = European US = United States UNI = Universal V = Various

BANJO FITTINGS

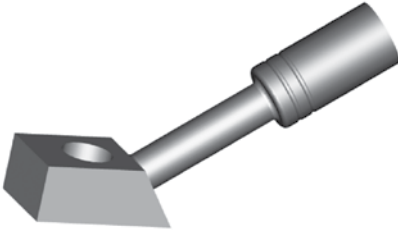
7/16" Hole

HFB299



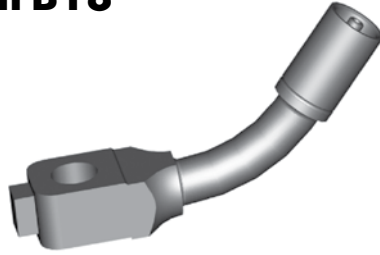
HOLE	THICK	WIDTH	ANGLE	OAL	FITS
7/16"	12mm	24.3mm	15°	150mm	US

HFB17



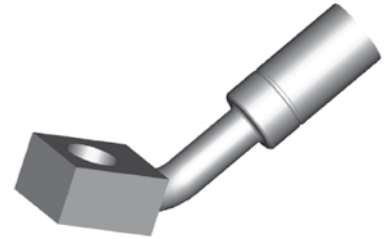
HOLE	THICK	WIDTH	ANGLE	OAL	FITS
10mm	11.5mm	17mm	35°	78mm	V

HFB18



HOLE	THICK	WIDTH	ANGLE	OAL	FITS
10mm	13mm	18mm	50°	78mm	A

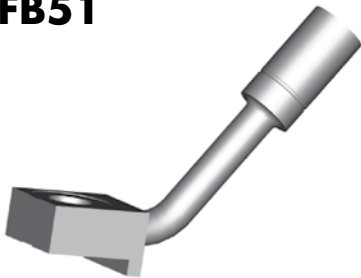
HFB21



HOLE	THICK	WIDTH	ANGLE	OAL	FITS
10mm	11.5mm	17mm	50°	72mm	V

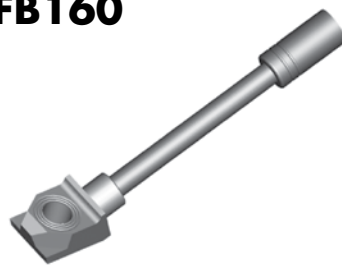
Tube Style (Either Side) - 10mm Hole

HFB51



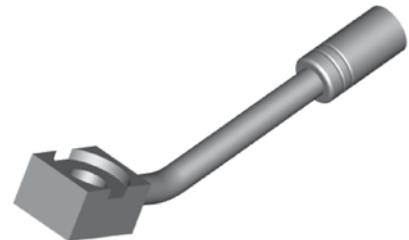
HOLE	THICK	WIDTH	ANGLE	OAL	FITS
10mm	11mm	22.2mm	55°	75mm	US

HFB160



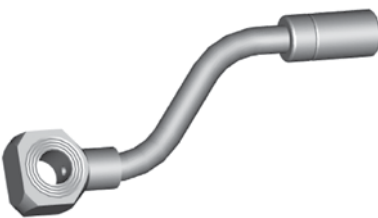
HOLE	THICK	WIDTH	ANGLE	OAL	FITS
10mm	11mm	20mm	25°	127mm	US

HFB161



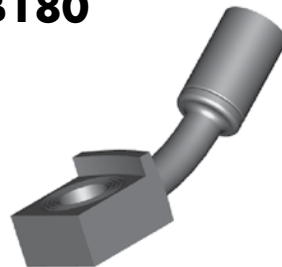
HOLE	THICK	WIDTH	ANGLE	OAL	FITS
10mm	11.5mm	20mm	30°	121mm	US

HFB173



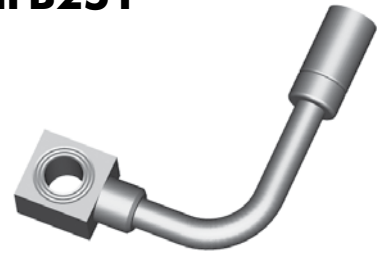
HOLE	THICK	WIDTH	ANGLE	OAL	FITS
10mm	12mm	22.2mm	50°	118mm	US

HFB180



HOLE	THICK	WIDTH	ANGLE	OAL	FITS
10mm	11mm	19.5mm	30°	65mm	US

HFB251



HOLE	THICK	WIDTH	ANGLE	OAL	FITS
10mm	12.6mm	19.6mm	90°	80mm	US

DID YOU KNOW?
Some flared tube style fittings are deliberately made longer to make them more universal. This enables you to bend the tube to the desired shape and allows you plenty of room to place the BQ23 test spade under the nut for testing.

A = Asian

EU = European

US = United States

UNI = Universal

V = Various

BANJO FITTINGS

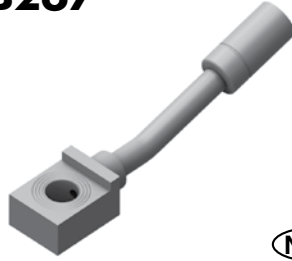
HFB256



NEW

HOLE	THICK	WIDTH	ANGLE	OAL	FITS
10mm	11.7mm	19.5mm	75°	110mm	US

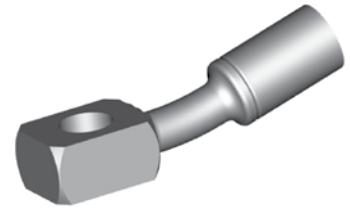
HFB267



NEW

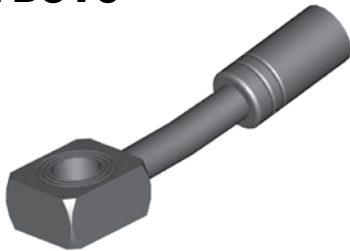
HOLE	THICK	WIDTH	ANGLE	OAL	FITS
10mm	11.7mm	20.5mm	15°	90mm	US

HFB309



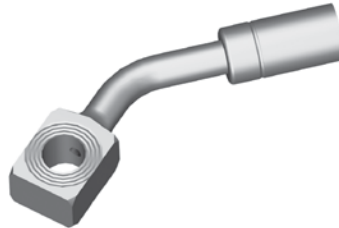
HOLE	THICK	WIDTH	ANGLE	OAL	FITS
10mm	11.5mm	17mm	15°	62mm	V

HFB310



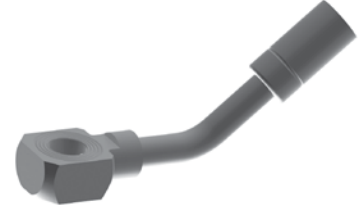
HOLE	THICK	WIDTH	ANGLE	OAL	FITS
10mm	11.5mm	19mm	10°	82mm	V

HFB378



HOLE	THICK	WIDTH	ANGLE	OAL	FITS
10mm	11.6mm	17mm	45°	-	US

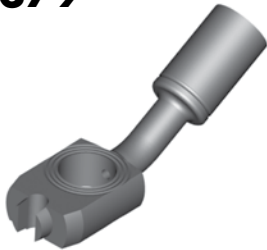
HFB405



NEW

HOLE	THICK	WIDTH	ANGLE	OAL	FITS
10mm	11.7mm	19.5mm	40°	57mm	US

HFB379



HOLE	THICK	WIDTH	ANGLE	OAL	FITS
12mm	8.5mm	19mm	30°	60mm	EU

Tube Style (Either Side) - 10mm Hole

12mm Hole

DID YOU KNOW?

BrakeQuip makes the round style banjo fittings that only have one bend in a straight form to allow you to easily bend the banjo shank to the desired shape. You can usually bend these banjo fittings up to 90° by using the available banjo bending tools.

DID YOU KNOW?

Some banjo fittings have the banjo hole offset from the center as a locator on the caliper. By reducing the offset amount from the opposite side also allows the banjo hole to be in the center and able to fit both sides instead of just one side only.

A = Asian

EU = European

US = United States

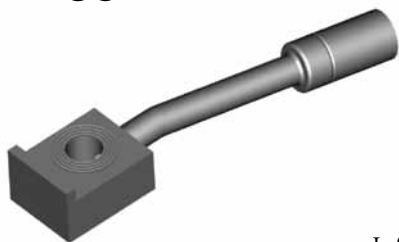
UNI = Universal

V = Various

BANJO FITTINGS

Tube Style (Left/Right) - 3/8" Hole

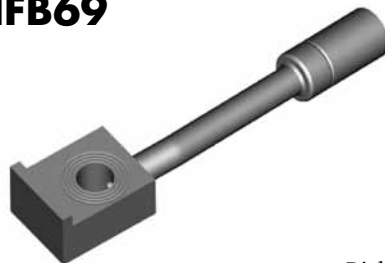
HFB68



Left

HOLE	THICK	WIDTH	ANGLE	OAL	FITS
3/8"	1/2"	22.4mm	7°	110mm	US

HFB69



Right

HOLE	THICK	WIDTH	ANGLE	OAL	FITS
3/8"	1/2"	22.4mm	7°	110mm	US

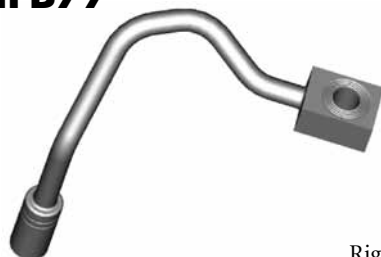
HFB76



Left

HOLE	THICK	WIDTH	ANGLE	OAL	FITS
3/8"	1/2"	19.7mm	90°	143mm	US

HFB77



Right

HOLE	THICK	WIDTH	ANGLE	OAL	FITS
3/8"	1/2"	19.7mm	90°	143mm	US

HFB82



Right

HOLE	THICK	WIDTH	ANGLE	OAL	FITS
3/8"	1/2"	26mm	50°	147mm	US

HFB83



Left

HOLE	THICK	WIDTH	ANGLE	OAL	FITS
3/8"	1/2"	26mm	50°	147mm	US

HFB102



Right

HOLE	THICK	WIDTH	ANGLE	OAL	FITS
3/8"	1/2"	23mm	23°	140mm	US

HFB103



Left

HOLE	THICK	WIDTH	ANGLE	OAL	FITS
3/8"	1/2"	23mm	23°	140mm	US

HFB115



Right

HOLE	THICK	WIDTH	ANGLE	OAL	FITS
3/8"	1/2"	22.2mm	55°	112mm	US

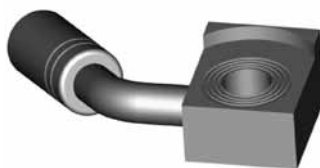
HFB116



Left

HOLE	THICK	WIDTH	ANGLE	OAL	FITS
3/8"	1/2"	22.2mm	55°	112mm	US

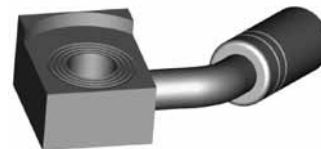
HFB125



Left

HOLE	THICK	WIDTH	ANGLE	OAL	FITS
3/8"	1/2"	25mm	55°	64mm	US

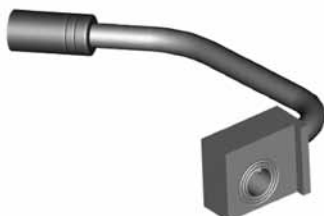
HFB126



Right

HOLE	THICK	WIDTH	ANGLE	OAL	FITS
3/8"	1/2"	25mm	55°	64mm	US

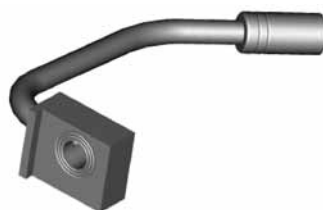
HFB127



Right

HOLE	THICK	WIDTH	ANGLE	OAL	FITS
3/8"	1/2"	25mm	90°	136mm	US

HFB128



Left

HOLE	THICK	WIDTH	ANGLE	OAL	FITS
3/8"	1/2"	25mm	90°	136mm	US

HFB129



Left

HOLE	THICK	WIDTH	ANGLE	OAL	FITS
3/8"	1/2"	25mm	85°	185mm	US

A = Asian

EU = European

US = United States

UNI = Universal

V = Various

BANJO FITTINGS

HFB130



Right

HOLE	THICK	WIDTH	ANGLE	OAL	FITS
3/8"	1/2"	25mm	85°	185mm	US

HFB131



Right

HOLE	THICK	WIDTH	ANGLE	OAL	FITS
3/8"	1/2"	25mm	30°	148mm	US

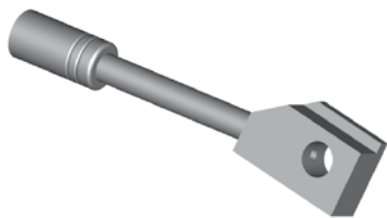
HFB132



Left

HOLE	THICK	WIDTH	ANGLE	OAL	FITS
3/8"	1/2"	25mm	30°	148mm	US

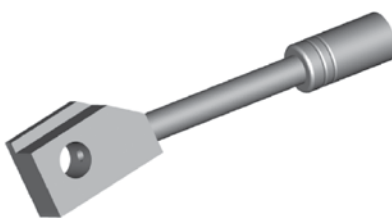
HFB135



Right

HOLE	THICK	WIDTH	ANGLE	OAL	FITS
3/8"	7/16"	22.2mm	10°	114mm	US

HFB136



Left

HOLE	THICK	WIDTH	ANGLE	OAL	FITS
3/8"	7/16"	22.2mm	10°	114mm	US

HFB140

NEW



Left

HOLE	THICK	WIDTH	ANGLE	OAL	FITS
3/8"	1/2"	22.2mm	75°	111mm	US

HFB141

NEW



Right

HOLE	THICK	WIDTH	ANGLE	OAL	FITS
3/8"	1/2"	22.2mm	75°	111mm	US

HFB155



Right

HOLE	THICK	WIDTH	ANGLE	OAL	FITS
3/8"	1/2"	25mm	70°	190mm	US

HFB156



Left

HOLE	THICK	WIDTH	ANGLE	OAL	FITS
3/8"	1/2"	25mm	70°	190mm	US

HFB174



Right

HOLE	THICK	WIDTH	ANGLE	OAL	FITS
3/8"	1/2"	22.2mm	90°	70mm	US

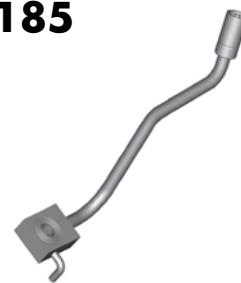
HFB175



Left

HOLE	THICK	WIDTH	ANGLE	OAL	FITS
3/8"	1/2"	22.2mm	90°	70mm	US

HFB185



Left

HOLE	THICK	WIDTH	ANGLE	OAL	FITS
3/8"	1/2"	25mm	75°	180mm	US

HFB209



Left

HOLE	THICK	WIDTH	ANGLE	OAL	FITS
3/8"	1/2"	23mm	90°	180mm	US

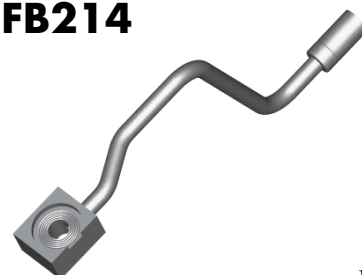
HFB210



Right

HOLE	THICK	WIDTH	ANGLE	OAL	FITS
3/8"	1/2"	23mm	90°	180mm	US

HFB214



Left

HOLE	THICK	WIDTH	ANGLE	OAL	FITS
3/8"	1/2"	25.4mm	75°	245mm	US

Tube Style (Left/Right) - 3/8" Hole

A = Asian

EU = European

US = United States

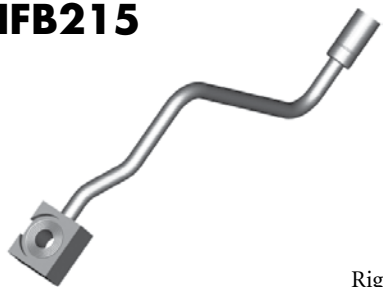
UNI = Universal

V = Various

BANJO FITTINGS

Tube Style (Left/Right) - 3/8" Hole

HFB215



Right

HOLE	THICK	WIDTH	ANGLE	OAL	FITS
3/8"	1/2"	25.4mm	75°	245mm	US

HFB217



Right

HOLE	THICK	WIDTH	ANGLE	OAL	FITS
3/8"	1/2"	25.4mm	90°	210mm	US

HFB218



Left

HOLE	THICK	WIDTH	ANGLE	OAL	FITS
3/8"	1/2"	25.4mm	90°	210mm	US

HFB221



Left

HOLE	THICK	WIDTH	ANGLE	OAL	FITS
3/8"	1/2"	25.5mm	90°	180mm	US

HFB222

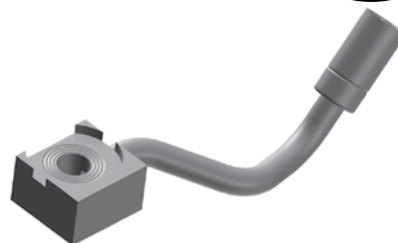


Right

HOLE	THICK	WIDTH	ANGLE	OAL	FITS
3/8"	1/2"	25.5mm	90°	180mm	US

HFB270

NEW



HOLE	THICK	WIDTH	ANGLE	OAL	FITS
3/8"	1/2"	25.4mm	-	-	US

HFB277

NEW

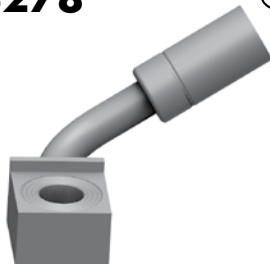


Right

HOLE	THICK	WIDTH	ANGLE	OAL	FITS
3/8"	1/2"	22.2mm	90°	73mm	US

HFB278

NEW



Left

HOLE	THICK	WIDTH	ANGLE	OAL	FITS
3/8"	1/2"	22.2mm	90°	73mm	US

HFB306



Right

HOLE	THICK	WIDTH	ANGLE	OAL	FITS
3/8"	1/2"	26mm	70°	134mm	US

HFB307



Left

HOLE	THICK	WIDTH	ANGLE	OAL	FITS
3/8"	1/2"	26mm	70°	134mm	US

HFB315



Left

HOLE	THICK	WIDTH	ANGLE	OAL	FITS
3/8"	1/2"	22.2mm	-	195mm	US

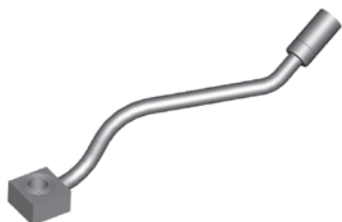
HFB316



Right

HOLE	THICK	WIDTH	ANGLE	OAL	FITS
3/8"	1/2"	22.2mm	-	195mm	US

HFB317



Left

HOLE	THICK	WIDTH	ANGLE	OAL	FITS
3/8"	1/2"	22.2mm	65°	178mm	US

HFB318



Right

HOLE	THICK	WIDTH	ANGLE	OAL	FITS
3/8"	1/2"	22.2mm	65°	178mm	US

HFB321



Right

HOLE	THICK	WIDTH	ANGLE	OAL	FITS
3/8"	1/2"	24.4mm	-	105mm	US

A = Asian

EU = European

US = United States

UNI = Universal

V = Various

BANJO FITTINGS

HFB322



Left

HOLE	THICK	WIDTH	ANGLE	OAL	FITS
3/8"	1/2"	24.4mm	-	105mm	US

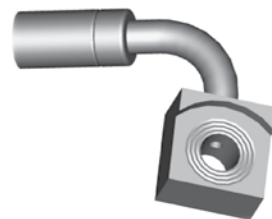
HFB323



Left

HOLE	THICK	WIDTH	ANGLE	OAL	FITS
3/8"	1/2"	23mm	90°	63mm	US

HFB324



Right

HOLE	THICK	WIDTH	ANGLE	OAL	FITS
3/8"	1/2"	23mm	90°	63mm	US

HFB380



Left

HOLE	THICK	WIDTH	ANGLE	OAL	FITS
3/8"	7/16"	25.4mm	60°	165mm	US

HFB381

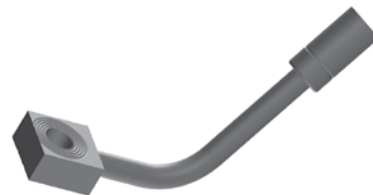


Right

HOLE	THICK	WIDTH	ANGLE	OAL	FITS
3/8"	7/16"	25.4mm	60°	165mm	US

HFB418

NEW



Left

HOLE	THICK	WIDTH	ANGLE	OAL	FITS
3/8"	7/16"	7/8"	60°	80mm	US

HFB419

NEW



Right

HOLE	THICK	WIDTH	ANGLE	OAL	FITS
3/8"	7/16"	7/8"	60°	80mm	US

HFB430

NEW



Right

HOLE	THICK	WIDTH	ANGLE	OAL	FITS
3/8"	1/2"	23.3mm	-	-	US

HFB431

NEW



Left

HOLE	THICK	WIDTH	ANGLE	OAL	FITS
3/8"	1/2"	23.3mm	-	-	US

Tube Style (Left/Right) - 3/8" Hole

A = Asian

EU = European

US = United States

UNI = Universal

V = Various

BANJO FITTINGS

Tube Style (Left/Right) - 7/16" Hole

HFB78



Left

HOLE	THICK	WIDTH	ANGLE	OAL	FITS
7/16"	11mm	22.2mm	90°	133mm	US

HFB79



Right

HOLE	THICK	WIDTH	ANGLE	OAL	FITS
7/16"	11mm	22.2mm	90°	133mm	US

HFB94



Left

HOLE	THICK	WIDTH	ANGLE	OAL	FITS
7/16"	11.6mm	20mm	90°	110mm	US

HFB95



Right

HOLE	THICK	WIDTH	ANGLE	OAL	FITS
7/16"	11.6mm	20mm	90°	110mm	US

HFB123



Left

HOLE	THICK	WIDTH	ANGLE	OAL	FITS
7/16"	14.8mm	22.2mm	85°	90mm	US

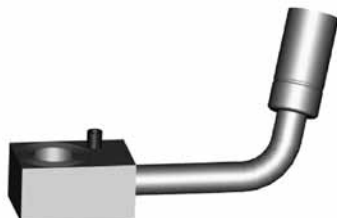
HFB124



Right

HOLE	THICK	WIDTH	ANGLE	OAL	FITS
7/16"	14.8mm	22.2mm	85°	90mm	US

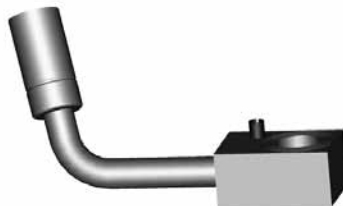
HFB176



Left

HOLE	THICK	WIDTH	ANGLE	OAL	FITS
7/16"	14.8mm	20.6mm	75°	70mm	US

HFB177



Right

HOLE	THICK	WIDTH	ANGLE	OAL	FITS
7/16"	14.8mm	20.6mm	75°	70mm	US

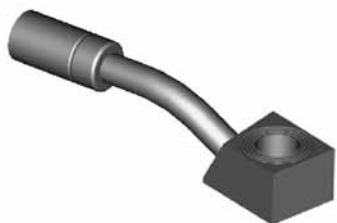
HFB189



Right

HOLE	THICK	WIDTH	ANGLE	OAL	FITS
7/16"	15mm	20mm	30°	90mm	US

HFB190



Left

HOLE	THICK	WIDTH	ANGLE	OAL	FITS
7/16"	15mm	20mm	30°	90mm	US

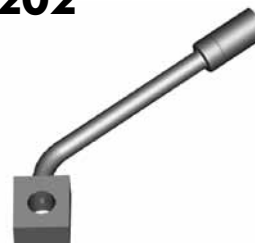
HFB201



Left

HOLE	THICK	WIDTH	ANGLE	OAL	FITS
7/16"	1/2"	22.2mm	55°	125mm	US

HFB202



Right

HOLE	THICK	WIDTH	ANGLE	OAL	FITS
7/16"	1/2"	22.2mm	55°	125mm	US

HFB237



Right

HOLE	THICK	WIDTH	ANGLE	OAL	FITS
7/16"	7/16"	22.2mm	90°	100mm	US

HFB238



Left

HOLE	THICK	WIDTH	ANGLE	OAL	FITS
7/16"	7/16"	22.2mm	90°	100mm	US

A = Asian

EU = European

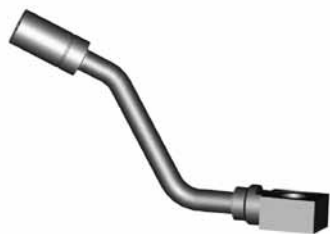
US = United States

UNI = Universal

V = Various

BANJO FITTINGS

HFB42



Left

HOLE	THICK	WIDTH	ANGLE	OAL	FITS
10mm	12mm	19.6mm	60°	130mm	US

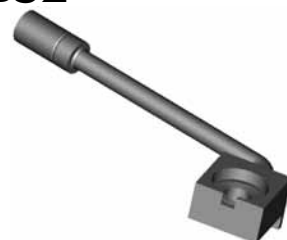
HFB43



Right

HOLE	THICK	WIDTH	ANGLE	OAL	FITS
10mm	12mm	19.6mm	60°	130mm	US

HFB52



Right

Left=HFB74

HOLE	THICK	WIDTH	ANGLE	OAL	FITS
10mm	11mm	28.6mm	107°	145mm	US

HFB86



Left

HOLE	THICK	WIDTH	ANGLE	OAL	FITS
10mm	11.2mm	28.6mm	70°	175mm	US

HFB87



Right

HOLE	THICK	WIDTH	ANGLE	OAL	FITS
10mm	11.2mm	28.6mm	70°	175mm	US

HFB74

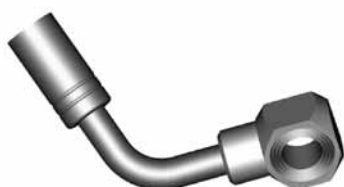


Left

Right=HFB52

HOLE	THICK	WIDTH	ANGLE	OAL	FITS
10mm	11mm	28.6mm	107°	145mm	US

HFB107



Right

HOLE	THICK	WIDTH	ANGLE	OAL	FITS
10mm	11.6mm	20mm	75°	86mm	US

HFB108



Left

HOLE	THICK	WIDTH	ANGLE	OAL	FITS
10mm	11.6mm	20mm	75°	86mm	US

HFB113



Right

HOLE	THICK	WIDTH	ANGLE	OAL	FITS
10mm	11.8mm	42mm	30°	130mm	US

HFB114



Left

HOLE	THICK	WIDTH	ANGLE	OAL	FITS
10mm	11.8mm	42mm	30°	130mm	US

HFB117



Left

HOLE	THICK	WIDTH	ANGLE	OAL	FITS
10mm	12mm	20mm	90°	50mm	US

HFB118



Right

HOLE	THICK	WIDTH	ANGLE	OAL	FITS
10mm	12mm	20mm	90°	50mm	US

HFB119



Right

HOLE	THICK	WIDTH	ANGLE	OAL	FITS
10mm	12mm	20mm	90°	60mm	US

HFB120



Left

HOLE	THICK	WIDTH	ANGLE	OAL	FITS
10mm	12mm	20mm	90°	60mm	US

HFB121



Right

HOLE	THICK	WIDTH	ANGLE	OAL	FITS
10mm	12.7mm	22.2mm	65°	127mm	US

Tube Style (Left/Right) - 10mm Hole

A = Asian

EU = European

US = United States

UNI = Universal

V = Various

BANJO FITTINGS

Tube Style (Left/Right) - 10mm Hole

HFB122



Left

HOLE	THICK	WIDTH	ANGLE	OAL	FITS
10mm	12.7mm	22.2mm	65°	127mm	US

HFB142



Right

HOLE	THICK	WIDTH	ANGLE	OAL	FITS
10mm	11.8mm	22.2mm	75°	99mm	US

HFB143



Left

HOLE	THICK	WIDTH	ANGLE	OAL	FITS
10mm	11.8mm	22.2mm	75°	99mm	US

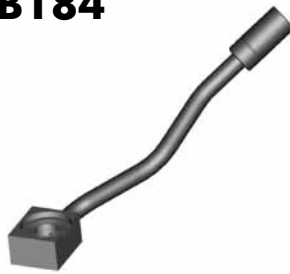
HFB183



Left

HOLE	THICK	WIDTH	ANGLE	OAL	FITS
10mm	11.7mm	22.2mm	70°	-	US

HFB184



Right

HOLE	THICK	WIDTH	ANGLE	OAL	FITS
10mm	11.7mm	22.2mm	70°	-	US

HFB216



Right

HOLE	THICK	WIDTH	ANGLE	OAL	FITS
10mm	11.7mm	26mm	20°	200mm	US

HFB239



Right

HOLE	THICK	WIDTH	ANGLE	OAL	FITS
10mm	11.7mm	22.2mm	55°	200mm	US

HFB240



Left

HOLE	THICK	WIDTH	ANGLE	OAL	FITS
10mm	11.7mm	22.2mm	55°	200mm	US

HFB241



Right

HOLE	THICK	WIDTH	ANGLE	OAL	FITS
10mm	11.7mm	22.2mm	50°	100mm	US

HFB242



Left

HOLE	THICK	WIDTH	ANGLE	OAL	FITS
10mm	11.5mm	22.2mm	80°	220mm	US

HFB245



Right

HOLE	THICK	WIDTH	ANGLE	OAL	FITS
10mm	11.7mm	22.2mm	85°	100mm	US

HFB246



Left

HOLE	THICK	WIDTH	ANGLE	OAL	FITS
10mm	11.7mm	22.2mm	85°	100mm	US

HFB247



Left

HOLE	THICK	WIDTH	ANGLE	OAL	FITS
10mm	11.7mm	22.2mm	30°	-	US

HFB248



Right

HOLE	THICK	WIDTH	ANGLE	OAL	FITS
10mm	11.7mm	22.2mm	30°	-	US

HFB249



Left

HOLE	THICK	WIDTH	ANGLE	OAL	FITS
10mm	11.7mm	22.2mm	50°	-	US

A = Asian

EU = European

US = United States

UNI = Universal

V = Various

BANJO FITTINGS

HFB250



Right

HOLE	THICK	WIDTH	ANGLE	OAL	FITS
10mm	11.7mm	22.2mm	50°	-	US

HFB259

NEW



Left

HOLE	THICK	WIDTH	ANGLE	OAL	FITS
10mm	1/2"	20.5mm	90°	110mm	US

HFB260

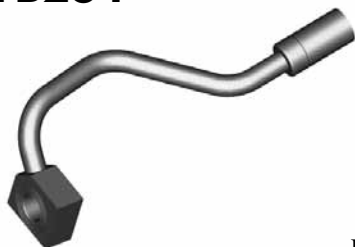
NEW



Right

HOLE	THICK	WIDTH	ANGLE	OAL	FITS
10mm	1/2"	20.5mm	90°	110mm	US

HFB284



Left

HOLE	THICK	WIDTH	ANGLE	OAL	FITS
10mm	11.5mm	24.4mm	75°	-	US

HFB285



Right

HOLE	THICK	WIDTH	ANGLE	OAL	FITS
10mm	11.5mm	22.4mm	75°	-	US

HFB328



Right

HOLE	THICK	WIDTH	ANGLE	OAL	FITS
10mm	11mm	22mm	110°	75mm	A

HFB329



Left

HOLE	THICK	WIDTH	ANGLE	OAL	FITS
10mm	11mm	22mm	110°	75mm	A

HFB332



Right

HOLE	THICK	WIDTH	ANGLE	OAL	FITS
10mm	11.7mm	22.2mm	90°	65mm	US

HFB333



Left

HOLE	THICK	WIDTH	ANGLE	OAL	FITS
10mm	11.7mm	22.2mm	-	95mm	US

HFB367



Left

HOLE	THICK	WIDTH	ANGLE	OAL	FITS
10mm	11mm	18mm	90°	60mm	A

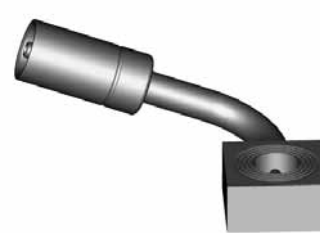
HFB368



Right

HOLE	THICK	WIDTH	ANGLE	OAL	FITS
10mm	11mm	18mm	90°	60mm	A

HFB369



Left

HOLE	THICK	WIDTH	ANGLE	OAL	FITS
10mm	11mm	22mm	90°	60mm	A

HFB370



Right

HOLE	THICK	WIDTH	ANGLE	OAL	FITS
10mm	11mm	22mm	90°	60mm	A

HFB376



Left

HOLE	THICK	WIDTH	ANGLE	OAL	FITS
10mm	11.5mm	17mm	55°	-	A

HFB377



Right

HOLE	THICK	WIDTH	ANGLE	OAL	FITS
10mm	11.5mm	17mm	55°	-	A

Tube Style (Left/Right) - 10mm Hole

A = Asian

EU = European

US = United States

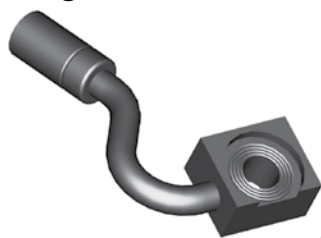
UNI = Universal

V = Various

BANJO FITTINGS

Tube Style (Left/Right) - 10mm Hole

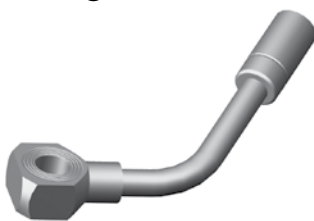
HFB404



Right

HOLE	THICK	WIDTH	ANGLE	OAL	FITS
10mm	11.7mm	22.2mm	125°	-	US

HFB410



Left

HOLE	THICK	WIDTH	ANGLE	OAL	FITS
10mm	12mm	22mm	55°	-	US

HFB411



Right

HOLE	THICK	WIDTH	ANGLE	OAL	FITS
10mm	12mm	22mm	55°	-	US

HFB450

NEW



Right

HOLE	THICK	WIDTH	ANGLE	OAL	FITS
10mm	12.5mm	20mm	90°	80mm	US

HFB451

NEW



Left

HOLE	THICK	WIDTH	ANGLE	OAL	FITS
10mm	12.5mm	20mm	90°	80mm	US

HFB474

NEW



Right

HOLE	THICK	WIDTH	ANGLE	OAL	FITS
10mm	1/2"	18mm	-	-	US

HFB475

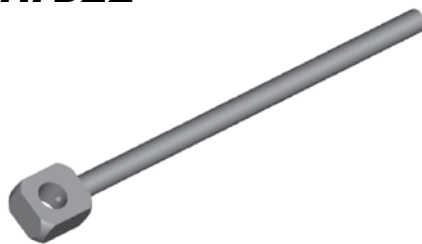
NEW



Left

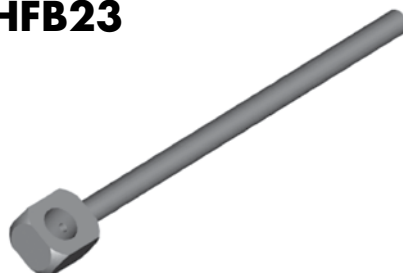
HOLE	THICK	WIDTH	ANGLE	OAL	FITS
10mm	1/2"	18mm	-	-	US

HFB22



HOLE	THICK	WIDTH	ANGLE	OAL	FITS
10mm	11.5mm	19mm	-	172mm	UNI

HFB23



HOLE	THICK	WIDTH	ANGLE	OAL	FITS
7/16"	1/2"	19mm	-	172mm	UNI

Universal

DID YOU KNOW?

Manufacturers design their fittings to suit resources available to them. For instance, some manufacturers make their female fittings with a 3/4" hex to give them a shoulder to mount to, but others prefer to make them from 5/8" hex and then supply a shoulder clip for the shoulder to mount to. BrakeQuip supplies these in both styles. Therefore the following applies.
 HFIF01 = HFIF36, HFIF02 = HFIF24,
 HFIF05 = HFIF45 and vice versa.

A = Asian

EU = European

US = United States

UNI = Universal

V = Various