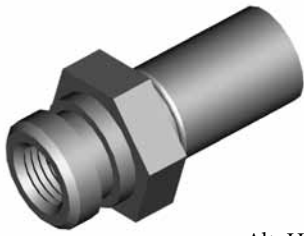


IMPERIAL FEMALE FITTINGS

HFIF01



Alt. HFIF36

THREAD	SEAT	MOUNT	HEX	OAL	FITS
3/8" x 24NF	Inverted	Clip	19mm	38mm	V

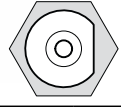
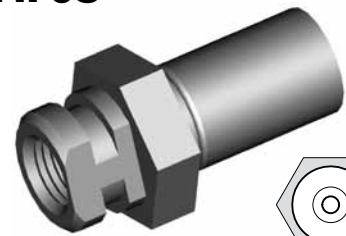
HFIF01B



Brass

THREAD	SEAT	MOUNT	HEX	OAL	FITS
3/8" x 24NF	Inverted	Clip	17mm	38mm	V

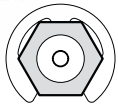
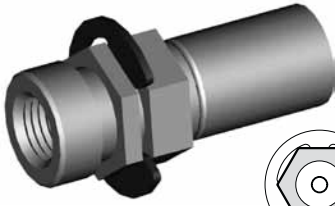
HFIF05



Alt. HFIF45

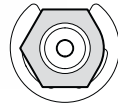
THREAD	SEAT	MOUNT	HEX	OAL	FITS
3/8" x 24NF	Inverted	Clip	19mm	38mm	V

HFIF07



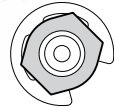
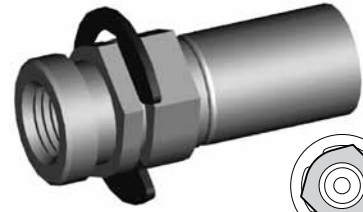
THREAD	SEAT	MOUNT	HEX	OAL	FITS
3/8" x 24NF	Inverted	Clip	16mm	41mm	US

HFIF08



THREAD	SEAT	MOUNT	HEX	OAL	FITS
3/8" x 24NF	Inverted	Clip	16mm	41mm	US

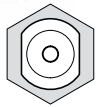
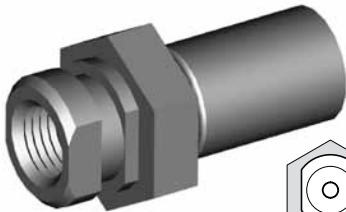
HFIF10



THREAD	SEAT	MOUNT	HEX	OAL	FITS
3/8" x 24NF	Inverted	Clip	16mm	39mm	US

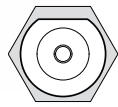
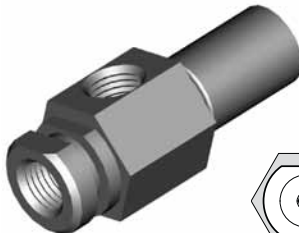
Clip Mount - 3/8" x 24NF

HFIF11



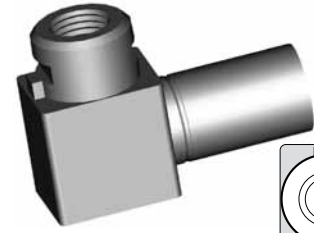
THREAD	SEAT	MOUNT	HEX	OAL	FITS
3/8" x 24NF	Inverted	Clip	19mm	38mm	V

HFIF14



THREAD	SEAT	MOUNT	HEX	OAL	FITS
3/8" x 24NF x 2	Inverted	Clip	19mm	50mm	US

HFIF18



THREAD	SEAT	MOUNT	HEX	OAL	FITS
3/8" x 24NF	Inverted	Clip	-	41mm	US

HFIF19



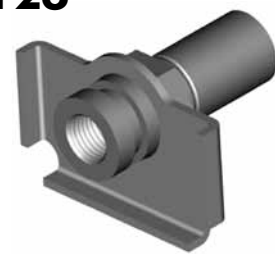
THREAD	SEAT	MOUNT	HEX	OAL	FITS
3/8" x 24NF	Inverted	Clip	16mm	38mm	US

HFIF21



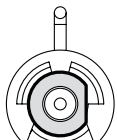
THREAD	SEAT	MOUNT	HEX	OAL	FITS
3/8" x 24NF	DPS	Clip	16mm	37mm	US

HFIF26



THREAD	SEAT	MOUNT	HEX	OAL	FITS
3/8" x 24NF	Inverted	Clip	16mm	40mm	US

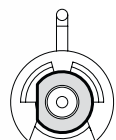
HFIF29



Left

THREAD	SEAT	MOUNT	HEX	OAL	FITS
3/8" x 24NF	Inverted	Clip	-	78mm	US

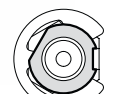
HFIF30



Right

THREAD	SEAT	MOUNT	HEX	OAL	FITS
3/8" x 24NF	Inverted	Clip	-	78mm	US

HFIF32



THREAD	SEAT	MOUNT	HEX	OAL	FITS
3/8" x 24NF	Inverted	Clip	17mm	41mm	US

A = Asian

EU = European

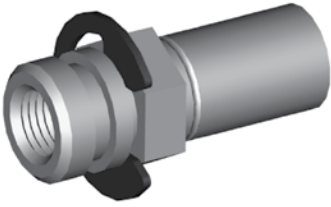
US = United States

UNI = Universal

V = Various

IMPERIAL FEMALE FITTINGS

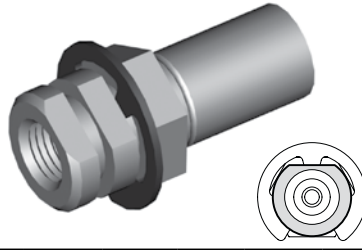
HFIF36



Alt. HFIF01

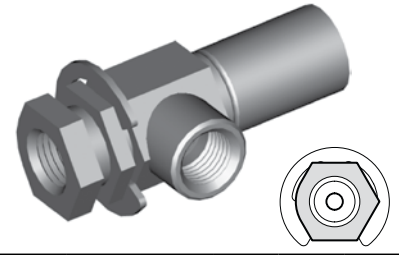
THREAD	SEAT	MOUNT	HEX	OAL	FITS
3/8" x 24NF	Inverted	Clip	16mm	39mm	US

HFIF38



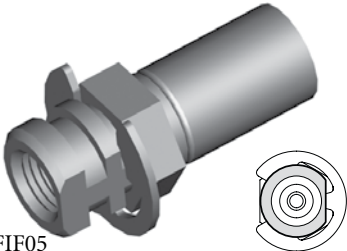
THREAD	SEAT	MOUNT	HEX	OAL	FITS
3/8" x 24NF	Inverted	Clip	17mm	40mm	US

HFIF40



THREAD	SEAT	MOUNT	HEX	OAL	FITS
3/8" x 24NF x 2	Inverted	Clip	16mm	48mm	US

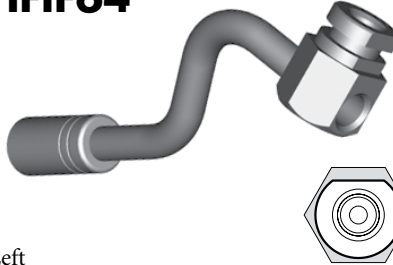
HFIF45



Alt. HFIF05

THREAD	SEAT	MOUNT	HEX	OAL	FITS
3/8" x 24NF	Inverted	Clip	16mm	39mm	US

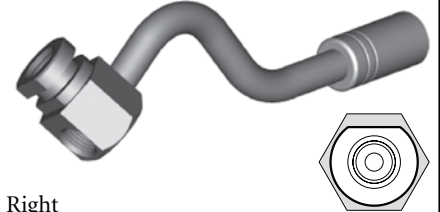
HFIF64



Left

THREAD	SEAT	MOUNT	HEX	OAL	FITS
3/8" x 24NF x 2	Inverted	Clip	19mm	137mm	US

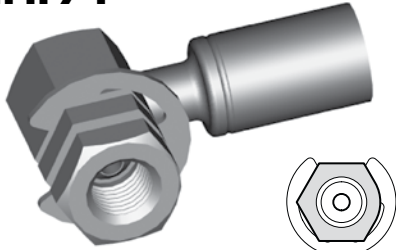
HFIF65



Right

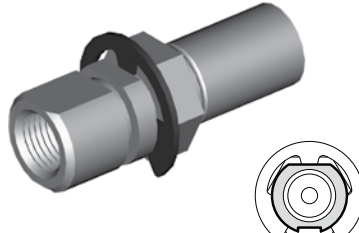
THREAD	SEAT	MOUNT	HEX	OAL	FITS
3/8" x 24NF x 2	Inverted	Clip	19mm	137mm	US

HFIF71



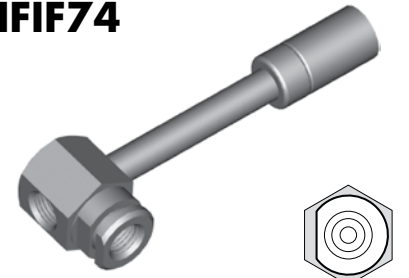
THREAD	SEAT	MOUNT	HEX	OAL	FITS
3/8" x 24NF	Inverted	Clip	16mm	45mm	US

HFIF72



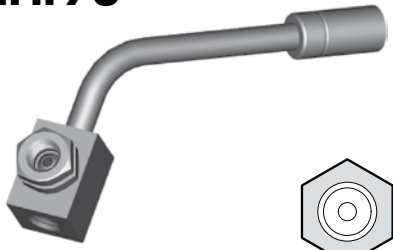
THREAD	SEAT	MOUNT	HEX	OAL	FITS
3/8" x 24NF	Inverted	Clip	17mm	47mm	US

HFIF74



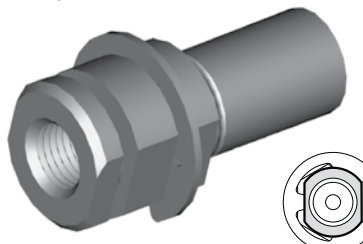
THREAD	SEAT	MOUNT	HEX	OAL	FITS
3/8" x 24NF x 2	Inverted	Clip	19mm	92mm	US

HFIF76



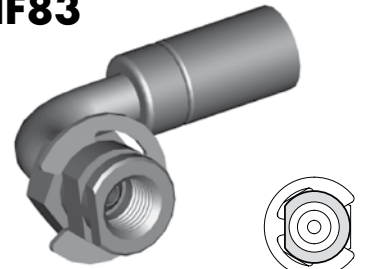
THREAD	SEAT	MOUNT	HEX	OAL	FITS
3/8" x 24NF x 2	Inverted	Clip	16mm	90mm	US

HFIF82



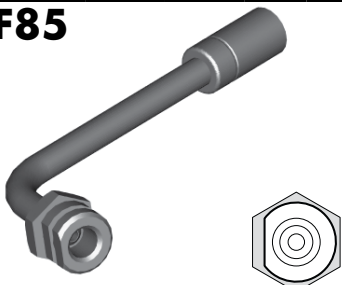
THREAD	SEAT	MOUNT	HEX	OAL	FITS
3/8" x 24NF	Inverted	Clip	16mm	40mm	US

HFIF83



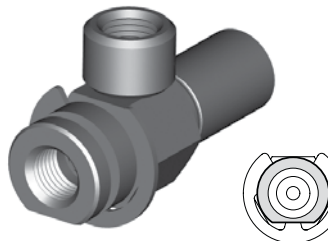
THREAD	SEAT	MOUNT	HEX	OAL	FITS
3/8" x 24NF	Inverted	Clip	16mm	55mm	US

HFIF85



THREAD	SEAT	MOUNT	HEX	OAL	FITS
3/8" x 24NF	Inverted	Clip	17.5mm	-	US

HFIF87



THREAD	SEAT	MOUNT	HEX	OAL	FITS
3/8" x 24NF x 2	Inverted	Clip	17.5mm	50mm	US

HFIF103



THREAD	SEAT	MOUNT	HEX	OAL	FITS
3/8" x 24NF	Inverted	Clip	-	52mm	US

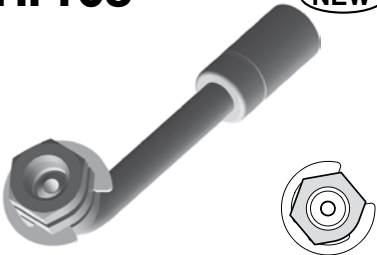
Clip Mount - 3/8" x 24NF

A = Asian EU = European US = United States UNI = Universal V = Various

IMPERIAL FEMALE FITTINGS

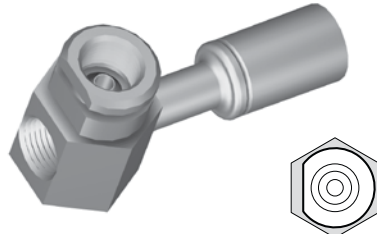
Clip Mount - 3/8" x 24NF

HFIF106 (NEW)



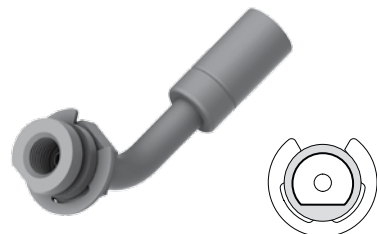
THREAD	SEAT	MOUNT	HEX	OAL	FITS
3/8" x 24NF	Inverted	Clip	16mm	68mm	US

HFIF107



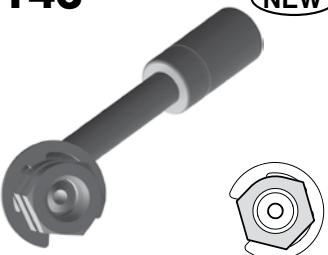
THREAD	SEAT	MOUNT	HEX	OAL	FITS
3/8" x 24NF x 2	Inverted	Clip	19mm	57mm	US

HFIF140 (NEW)



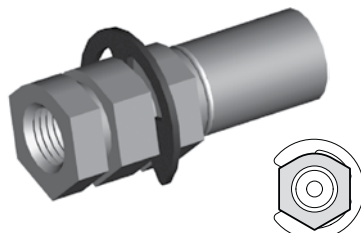
THREAD	SEAT	MOUNT	HEX	OAL	FITS
3/8" x 24NF	Inverted	Clip	17mm	64mm	US

HFIF143 (NEW)



THREAD	SEAT	MOUNT	HEX	OAL	FITS
3/8" x 24NF	Inverted	Clip	16mm	68mm	US

HFIF301



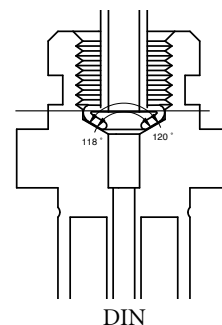
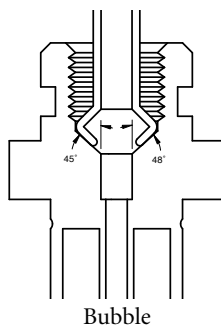
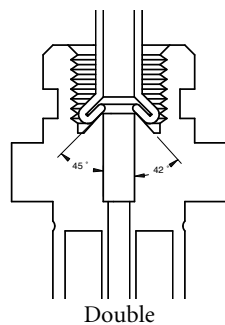
THREAD	SEAT	MOUNT	HEX	OAL	FITS
3/8" x 24NF	Inverted	Clip	16mm	43mm	US

DID YOU KNOW?

There are three different flare types.

1. A 45° double flare – the inverted seat angle is 42°
2. A 45° ISO flare (Bubble) – the female seat angle is 96°
3. A 31° DIN flare (Mushroom) – the female seat angle is 120°

The seat angles vary to the tube angle because it is important to seal the smallest diameter to get an effective seal.



IMPERIAL FEMALE FITTINGS

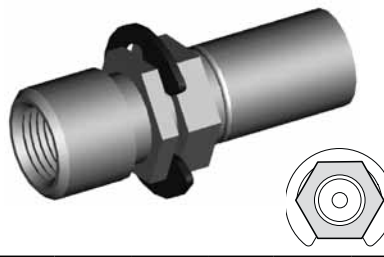
HFIF02



Alt. HFIF24

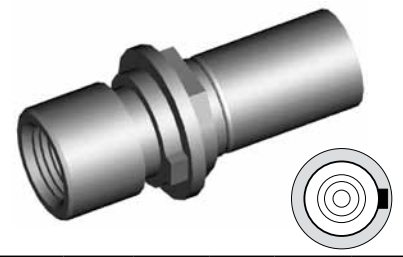
THREAD	SEAT	MOUNT	HEX	OAL	FITS
7/16" x 24NS	Inverted	Clip	19mm	38mm	V

HFIF09



THREAD	SEAT	MOUNT	HEX	OAL	FITS
7/16" x 24NS	Inverted	Clip	16mm	45mm	US

HFIF20



THREAD	SEAT	MOUNT	HEX	OAL	FITS
7/16" x 24NS	Inverted	Clip	16mm	44mm	US

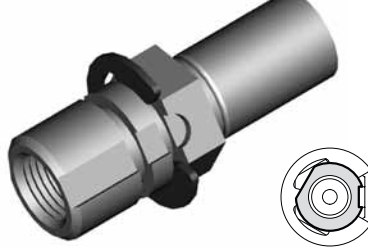
HFIF24



Alt. HFIF02

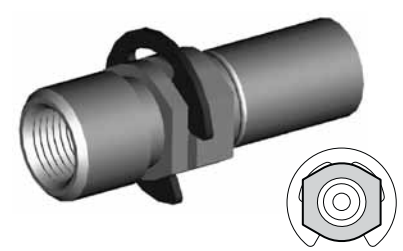
THREAD	SEAT	MOUNT	HEX	OAL	FITS
7/16" x 24NS	Inverted	Clip	16mm	40mm	US

HFIF33



THREAD	SEAT	MOUNT	HEX	OAL	FITS
7/16" x 24NS	Inverted	Clip	17mm	41mm	US

HFIF35



THREAD	SEAT	MOUNT	HEX	OAL	FITS
7/16" x 24NS	Inverted	Clip	16mm	46mm	US

HFIF51



THREAD	SEAT	MOUNT	HEX	OAL	FITS
7/16" x 24NS	Inverted	Clip	17mm	46mm	US

HFIF73



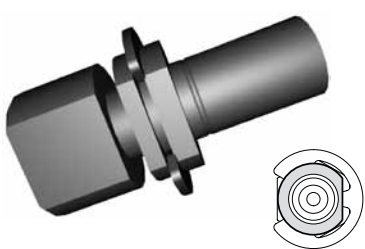
THREAD	SEAT	MOUNT	HEX	OAL	FITS
7/16" x 24NS	Inverted	Clip	17mm	47mm	US

HFIF116



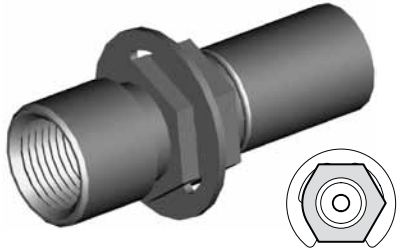
THREAD	SEAT	MOUNT	HEX	OAL	FITS
7/16" x 24NS	Inverted	Clip	5/8"	-	US

HFIF63



THREAD	SEAT	MOUNT	HEX	OAL	FITS
1/2" x 20NF	Inverted	Clip	-	47mm	US

HFIF79



THREAD	SEAT	MOUNT	HEX	OAL	FITS
1/2" x 20NF	Inverted	Clip	16mm	45mm	US

Clip Mount - 7/16" x 24NS

Clip Mount 1/2"

A = Asian

EU = European

US = United States

UNI = Universal

V = Various

IMPERIAL FEMALE FITTINGS

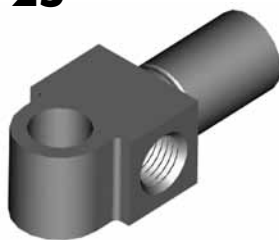
HFIF23



12mm Hole

THREAD	SEAT	MOUNT	HOLE	OAL	FITS
3/8" x 24NF x 2	Inverted	Bolted	12mm	65mm	US

HFIF25



10mm Hole

THREAD	SEAT	MOUNT	HOLE	OAL	FITS
3/8" x 24NF x 2	Inverted	Bolted	10mm	49mm	US

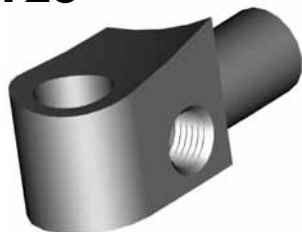
HFIF27



11.8mm Hole

THREAD	SEAT	MOUNT	HOLE	OAL	FITS
3/8" x 24NF x 2	Inverted	Bolted	11.8mm	70mm	US

HFIF28



11.8mm Hole

THREAD	SEAT	MOUNT	HOLE	OAL	FITS
3/8" NF-7/16" NS	Inverted	Bolted	11.8mm	52mm	US

HFIF31



11.9mm Hole

THREAD	SEAT	MOUNT	HOLE	OAL	FITS
3/8" NF-7/16" NS	Inverted	Bolted	11.9mm	52mm	US

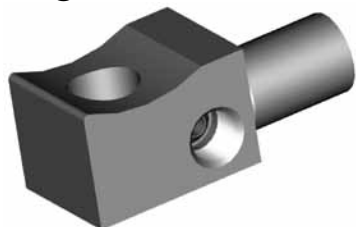
HFIF34



8/10mm Hole

THREAD	SEAT	MOUNT	HOLE	OAL	FITS
3/8" x 24NF x 2	Inverted	Bolted	8/10mm	49mm	US

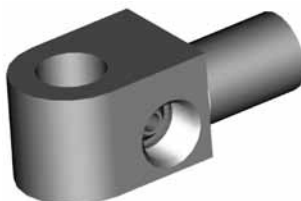
HFIF37



12mm Hole

THREAD	SEAT	MOUNT	HOLE	OAL	FITS
3/8" x 24NF x 2	Inverted	Bolted	12mm	53mm	US

HFIF39



11.8mm Hole

THREAD	SEAT	MOUNT	HOLE	OAL	FITS
3/8" NF-7/16" NS	Inverted	Bolted	11.8mm	52mm	US

HFIF43

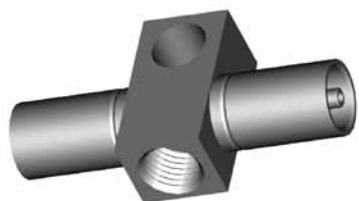


NEW

7.3mm Hole

THREAD	SEAT	MOUNT	HOLE	OAL	FITS
3/8" NF x 2	Inverted	Bolted	-	22mm	US

HFIF46



10mm Hole

THREAD	SEAT	MOUNT	HOLE	OAL	FITS
7/16" x 24NS	Inverted	Bolted	10mm	60mm	US

HFIF47



12mm Hole

THREAD	SEAT	MOUNT	HOLE	OAL	FITS
3/8" x 24NF x 2	Inverted	Bolted	12mm	50mm	US

HFIF48



11.5mm Hole

THREAD	SEAT	MOUNT	HOLE	OAL	FITS
3/8" NF-7/16" NS	Inverted	Bolted	11.5mm	53mm	US

HFIF53



11.8mm Hole

THREAD	SEAT	MOUNT	HOLE	OAL	FITS
3/8" x 24NF x 2	Inverted	Bolted	11.8mm	53mm	US

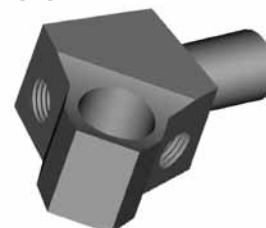
HFIF54



12mm Hole

THREAD	SEAT	MOUNT	HOLE	OAL	FITS
7/16" x 24NS	Inverted	Bolted	12mm	51mm	US

HFIF55



15mm Hole

THREAD	SEAT	MOUNT	HOLE	OAL	FITS
3/8" x 24NF x 2	Inverted	Bolted	15mm	58mm	US

Bolt On Mount

A = Asian

EU = European

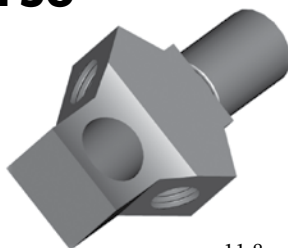
US = United States

UNI = Universal

V = Various

IMPERIAL FEMALE FITTINGS

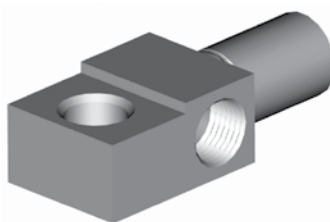
HFIF56



11.8mm Hole

THREAD	SEAT	MOUNT	HOLE	OAL	FITS
3/8" x 24NF x 2	Inverted	Bolted	11.8mm	55mm	US

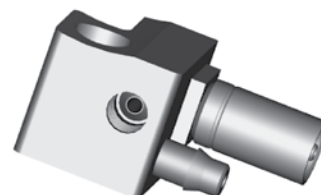
HFIF57



8/10mm Hole

THREAD	SEAT	MOUNT	HOLE	OAL	FITS
7/16" x 24NS x 2	Inverted	Bolted	8/10mm	54mm	US

HFIF58



11.5mm Hole

THREAD	SEAT	MOUNT	HOLE	OAL	FITS
3/8" x 24NF x 2	Inverted	Bolted	11.5mm	50mm	US

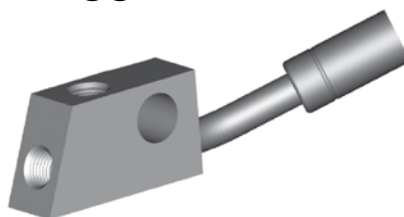
HFIF59



12mm Hole

THREAD	SEAT	MOUNT	HOLE	OAL	FITS
3/8" x 24NF x 2	Inverted	Bolted	12mm	100mm	US

HFIF66



11.9mm Hole

THREAD	SEAT	MOUNT	HOLE	OAL	FITS
3/8" x 24NF x 2	Inverted	Bolted	11.9mm	93mm	US

HFIF77



6.2mm Hole

THREAD	SEAT	MOUNT	HOLE	OAL	FITS
1/2" x 20NF	Inverted	Bolted	6.2mm	42mm	US

HFIF80



11.8mm Hole

THREAD	SEAT	MOUNT	HOLE	OAL	FITS
3/8" x 24NF x 2	Inverted	Bolted	11.8mm	52mm	US

HFIF88

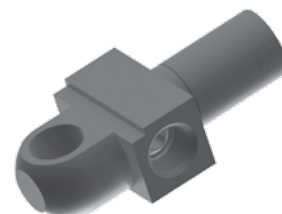


11.6mm Hole

THREAD	SEAT	MOUNT	HOLE	OAL	FITS
3/8" x 24NF	Inverted	Bolted	11.6mm	51mm	US

HFIF94

NEW

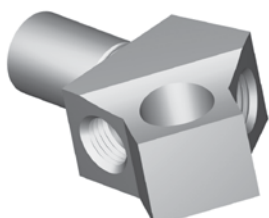


8/10mm Hole

THREAD	SEAT	MOUNT	HOLE	OAL	FITS
3/8" x 2	Inverted	Bolted	10/8mm	58mm	US

Bolt on Mount

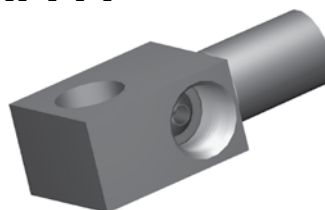
HFIF110



12.0mm Hole

THREAD	SEAT	MOUNT	HOLE	OAL	FITS
3/8" x 24NF x 2	Inverted	Bolted	12mm	-	US

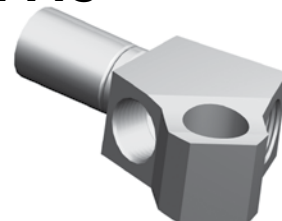
HFIF111



11.9mm Hole

THREAD	SEAT	MOUNT	HOLE	OAL	FITS
7/16" x 24NS - 2	Inverted	Bolt On	11.9mm	51mm	US

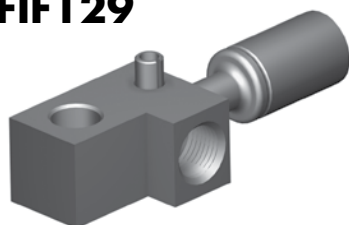
HFIF115



11.9mm Hole

THREAD	SEAT	MOUNT	HOLE	OAL	FITS
7/16" x 24NS x 2	Inverted	Bolted	11.9mm	57mm	US

HFIF129



Suits Nissan Sports
Use in conjunction with HF17 or HF33

8.75mm Hole

THREAD	SEAT	MOUNT	HOLE	OAL	FITS
3/8" x 24NF	Inverted	Bolted	8.75mm	75mm	A

HFIF303



11.4mm Hole

THREAD	SEAT	MOUNT	HOLE	OAL	FITS
3/8"NF-7/16"NS	Inverted	Bolted	11.4mm	70mm	US

A = Asian

EU = European

US = United States

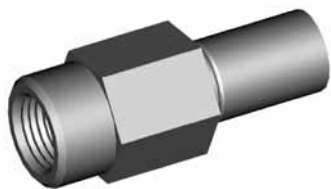
UNI = Universal

V = Various

IMPERIAL FEMALE FITTINGS

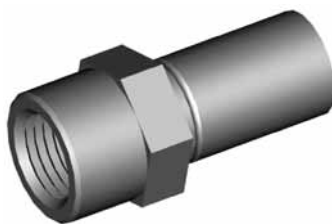
No Mount

HFIF03



THREAD	SEAT	MOUNT	HEX	OAL	FITS
1/2" x 20NF	DPS	-	19mm	50mm	US

HFIF06



THREAD	SEAT	MOUNT	HEX	OAL	FITS
1/2" x 20NF	Inverted	-	17mm	38mm	UNI

HFIFX01



Alt. HFIFX23
5/8" x 18NF External Thread

THREAD	SEAT	MOUNT	HEX	OAL	FITS
7/16" x 24NS	Inverted	Bulkhead	19mm	45mm	V

HFIFX02



5/8" x 18NF External Thread

THREAD	SEAT	MOUNT	HEX	OAL	FITS
3/8" x 24NF	Inverted	Bulkhead	19mm	45mm	V

HFIFX03



5/8" x 18NF External Thread

THREAD	SEAT	MOUNT	HEX	OAL	FITS
3/8"BSF	Inverted	Bulkhead	19mm	45mm	V

Bulkhead Mount

HFIFX04



5/8" x 18NF External Thread

THREAD	SEAT	MOUNT	HEX	OAL	FITS
7/16" x 20NF	Inverted	Bulkhead	19mm	45mm	V

HFIFX05



5/8" x 18NF External Thread

THREAD	SEAT	MOUNT	HEX	OAL	FITS
3/8" x 24NF	DPS	Bulkhead	19mm	45mm	V

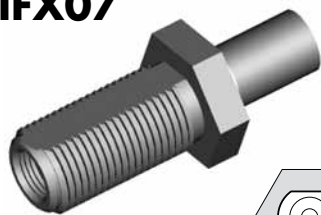
HFIFX06



5/8" x 18NF External Thread

THREAD	SEAT	MOUNT	HEX	OAL	FITS
7/16" x 24NS	Inverted	Bulkhead	16mm	46mm	US

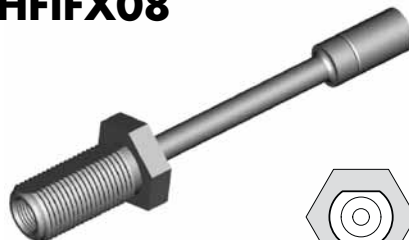
HFIFX07



3/4" x 16NF External Thread

THREAD	SEAT	MOUNT	HEX	OAL	FITS
7/16" x 24NS	Inverted	Bulkhead	25mm	65mm	US

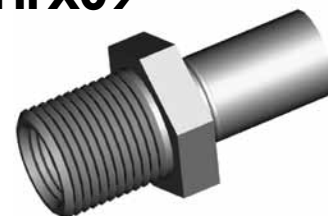
HFIFX08



3/4" x 16NF External Thread

THREAD	SEAT	MOUNT	HEX	OAL	FITS
7/16" x 24NS	Inverted	Bulkhead	25mm	135mm	US

HFIFX09



11/16 x 18NS External Thread

THREAD	SEAT	MOUNT	HEX	OAL	FITS
1/2" x 20NF	Inverted	Bulkhead	22mm	46mm	US

HFIFX10



5/8" x 18NF External Thread

THREAD	SEAT	MOUNT	HEX	OAL	FITS
3/8" x 24NF	Inverted	Bulkhead	22mm	117mm	US

HFIFX11



5/8" x 18NF External Thread

THREAD	SEAT	MOUNT	HEX	OAL	FITS
3/8" x 24NF	Inverted	Bulkhead	19mm	48mm	US

HFIFX12



5/8" x 18NF External Thread

THREAD	SEAT	MOUNT	HEX	OAL	FITS
7/16" x 24NS	Inverted	Bulkhead	22mm	54mm	US

A = Asian

EU = European

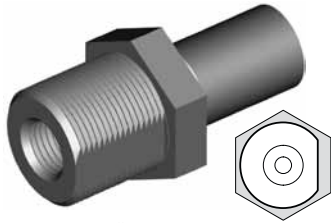
US = United States

UNI = Universal

V = Various

IMPERIAL FEMALE FITTINGS

HFIFX14



3/4" x 16NF External Thread

THREAD	SEAT	MOUNT	HEX	OAL	FITS
3/8" x 24NF	Inverted	Bulkhead	22mm	45mm	US

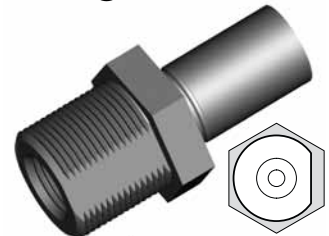
HFIFX15



5/8" x 18NF External Thread

THREAD	SEAT	MOUNT	HEX	OAL	FITS
3/8" x 24NF	Inverted	Bulkhead	16mm	47mm	US

HFIFX16



3/4" x 16NF External Thread

THREAD	SEAT	MOUNT	HEX	OAL	FITS
7/16" x 24NS	Inverted	Bulkhead	22mm	45mm	US

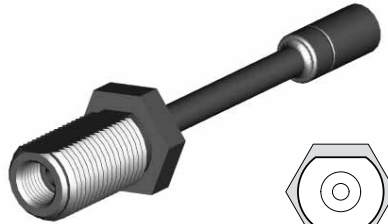
HFIFX17



7/8" x 14NF External Thread

THREAD	SEAT	MOUNT	HEX	OAL	FITS
1/2" x 20NF	Inverted	Bulkhead	27mm	65mm	US

HFIFX18



7/8" x 14NF External Thread

THREAD	SEAT	MOUNT	HEX	OAL	FITS
1/2" x 20NF	Inverted	Bulkhead	27mm	135mm	US

HFIFX20

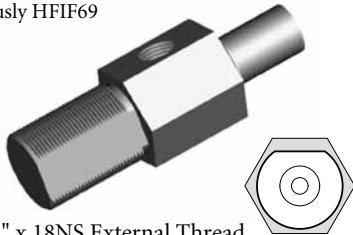


5/8" x 18NF External Thread

THREAD	SEAT	MOUNT	HEX	OAL	FITS
1/8"NPT	-	Bulkhead	19mm	45mm	US

HFIFX21

Previously HFIF69



7/8" x 18NS External Thread

THREAD	SEAT	MOUNT	HEX	OAL	FITS
7/16" x 24NS x 2	Inverted	Bulkhead	25mm	80mm	US

HFIFX22



7/8" x 14NF External Thread

THREAD	SEAT	MOUNT	HEX	OAL	FITS
7/16" x 24NS	Inverted	Bulkhead	1"	80mm	US

HFIFX23

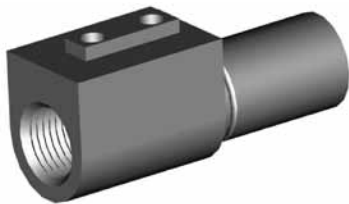


Alt. HFIFX01

5/8" x 18NF External Thread

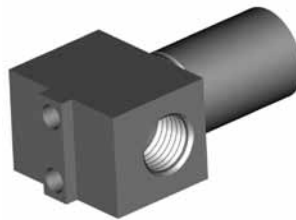
THREAD	SEAT	MOUNT	HEX	OAL	FITS
7/16" x 24NS	Inverted	Bulkhead	5/8"	46mm	V

HFIF15



THREAD	SEAT	MOUNT	HEX	OAL	FITS
3/8" x 24NF	Inverted	Bracket	-	46mm	US

HFIF22



THREAD	SEAT	MOUNT	HEX	OAL	FITS
3/8" x 24NF x 2	Inverted	Bracket	-	41mm	US

HFIF41



Right

THREAD	SEAT	MOUNT	HEX	OAL	FITS
3/8" x 24NF	Inverted	Bracket	-	50mm	US

HFIF42



Left

THREAD	SEAT	MOUNT	HEX	OAL	FITS
3/8" x 24NF	Inverted	Bracket	-	50mm	US

HFIF44



THREAD	SEAT	MOUNT	HEX	OAL	FITS
3/8" x 24NF x 2	Inverted	Bracket	-	50mm	US

HFIF52



THREAD	SEAT	MOUNT	HEX	OAL	FITS
7/16" x 24NS	Inverted	Bracket	-	46mm	US

Bulkhead Mount

Bracket Mount

A = Asian

EU = European

US = United States

UNI = Universal

V = Various

IMPERIAL FEMALE FITTINGS

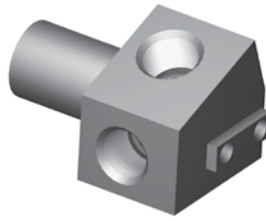
Bracket Mount

HFIF60



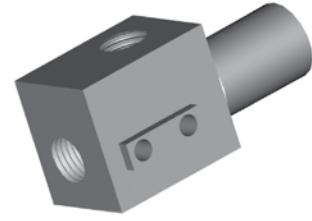
THREAD	SEAT	MOUNT	HEX	OAL	FITS
3/8" x 24NF x 2	Inverted	Bracket	-	102mm	US

HFIF60A



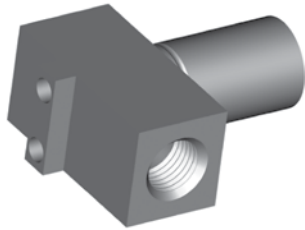
THREAD	SEAT	MOUNT	HEX	OAL	FITS
3/8" x 24NF - 2	Inverted	Bracket	-	42mm	US

HFIF70



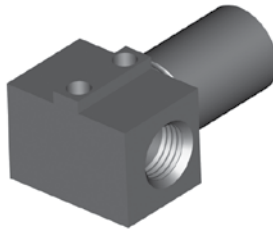
THREAD	SEAT	MOUNT	HEX	OAL	FITS
3/8" x 24NF x 2	Inverted	Bracket	-	48mm	US

HFIF81



THREAD	SEAT	MOUNT	HEX	OAL	FITS
3/8" x 24NF	Inverted	Bracket	-	38mm	US

HFIF90



THREAD	SEAT	MOUNT	HEX	OAL	FITS
3/8" x 24NF x 2	Inverted	Bracket	-	37mm	US

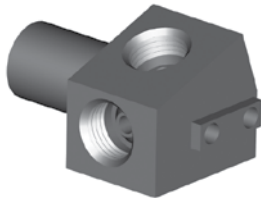
HFIF99

NEW



THREAD	SEAT	MOUNT	HEX	OAL	FITS
3/8"NF x 2	Inverted	Bracket	-	56mm	US

HFIF109



THREAD	SEAT	MOUNT	HEX	OAL	FITS
7/16" x 24NS x 2	Inverted	Bracket	-	46mm	US

HFIF127



Left

THREAD	SEAT	MOUNT	HEX	OAL	FITS
3/8" x 24NF	Inverted	Bracket	-	-	US

HFIF128

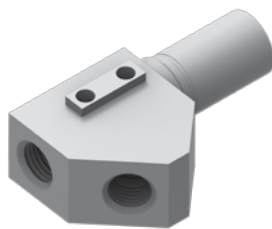


Right

THREAD	SEAT	MOUNT	HEX	OAL	FITS
3/8" x 24NF	Inverted	Bracket	-	-	US

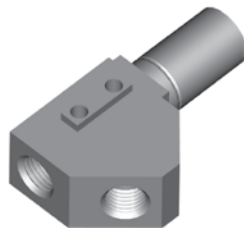
HFIF138

NEW



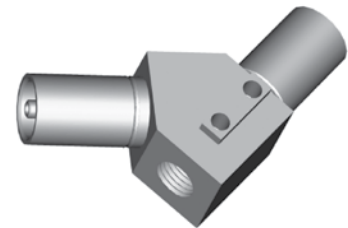
THREAD	SEAT	MOUNT	HEX	OAL	FITS
7/16" x 24NS x 2	Inverted	Bracket	-	53mm	US

HFIF304



THREAD	SEAT	MOUNT	HEX	OAL	FITS
3/8" x 24NF x 2	Inverted	Bracket	-	51mm	US

HFIF306



THREAD	SEAT	MOUNT	HEX	OAL	FITS
3/8" x 24NF	Inverted	Bracket	-	58mm	US

BQ71



Bracket Retaining Screws (PKT 50)

This thread forming screw is required to secure bracket to bracket mount fittings.

CAUTION

Illustrations shown in this reference guide may vary slightly in detail from actual parts due to manufacturer's tolerances and design differences. Note: Illustrations not to scale.

DISCLAIMER NOTICE

The illustrations and data contained in this illustrated reference guide are intended as an aid in identifying the various products and have been obtained and developed from the specifications and information available. Although BrakeQuip believes that such illustrations and data are correct, errors may exist and further verification on the part of the user may be necessary.

A = Asian

EU = European

US = United States

UNI = Universal

V = Various